



2025 ANNUAL REPORT

OUR MISSION The Montana Land Reliance (MLR) partners with private landowners to permanently protect agricultural lands, fish and wildlife habitat, and open space. The immediate accomplishments of MLR's conservation work are measured in acres of land protected and miles of streambank preserved. The lasting benefits of MLR's work are the perpetuation of a lifestyle and an economy that rely on responsibly managed private lands and the increasingly valuable Montana open spaces that will continue to nourish the spirit of future generations.



Dear Friends,

There's a simple idea that guides our work at The Montana Land Reliance: *Keep Montana, Montana*. It's more than a tagline – it's a shared commitment to the people, landscapes, traditions, and sense of place that make this state unlike anywhere else.

No matter how you came to love Montana, our working lands and wide horizons connect us. They shape our values, sustain our economy, and offer room to breathe, explore, and feel at home.

As Montana continues to change, one thing remains constant: the land is at the heart of who we are. Farms and ranches cover 90% of the state's private land and anchor our agricultural heritage. Rivers, grasslands, and forests support fish and wildlife while offering space for recreation and reflection. Protecting these places today ensures they remain part of all our lives tomorrow.

In 2025, MLR helped 28 families permanently protect 74,032 acres of Montana's working lands, wildlife habitat, and open space – our strongest year of conservation since 2007. With these completed easements, we are proud to report that 1,462,569 acres of working lands, wildlife habitat, and open space across the state is permanently

protected thanks to Montana's forward-thinking landowners. This is a powerful reminder of what's possible when we come together with a shared vision for the future.

But, at its core, our work has always been about more than numbers – it's about people. Every conservation easement represents a commitment to trust, stewardship, and family legacy. For many landowners, protecting their land is about honoring those who came before them and leaving it better than they found it so future generations can continue to farm, ranch, and care for the land they love. The stories shared in this annual report reflect that commitment and the enduring responsibility of keeping Montana's lands working and intact.

On behalf of the Board of Directors, thank you to our landowners, donors, partners, and friends. Your support makes this work possible. Together, we are meeting the moment and looking ahead with confidence. Thank you for standing with us to *Keep Montana, Montana*.

Sincerely,

Shane Colton, Board President

PRESIDENT'S MESSAGE

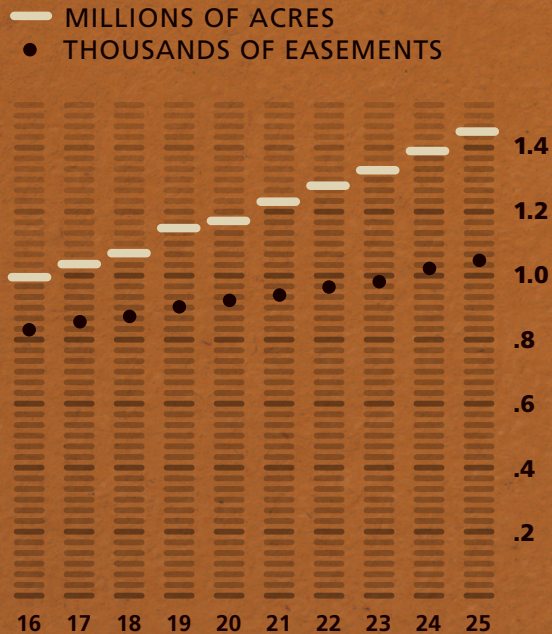


As Montana continues to change, one thing remains constant: the land is at the heart of who we are.

PRIVATE LAND CONSERVATION

Sixty-four million acres in Montana are privately owned, and 90% of those are in agricultural production. Private lands are home to valuable habitat and represent a large part of the state's water resources and forests. Forever protecting these important open spaces is a lasting benefit for future generations.

TOTAL CONSERVATION EASEMENTS AND ACREAGE, 2016-2025



IN 2025

28
conservation
easements

74,032 acres
total

66,301 acres
of range/forest

37,165 acres
of elk habitat

2,033 acres
of wetlands

67 miles
of streambank

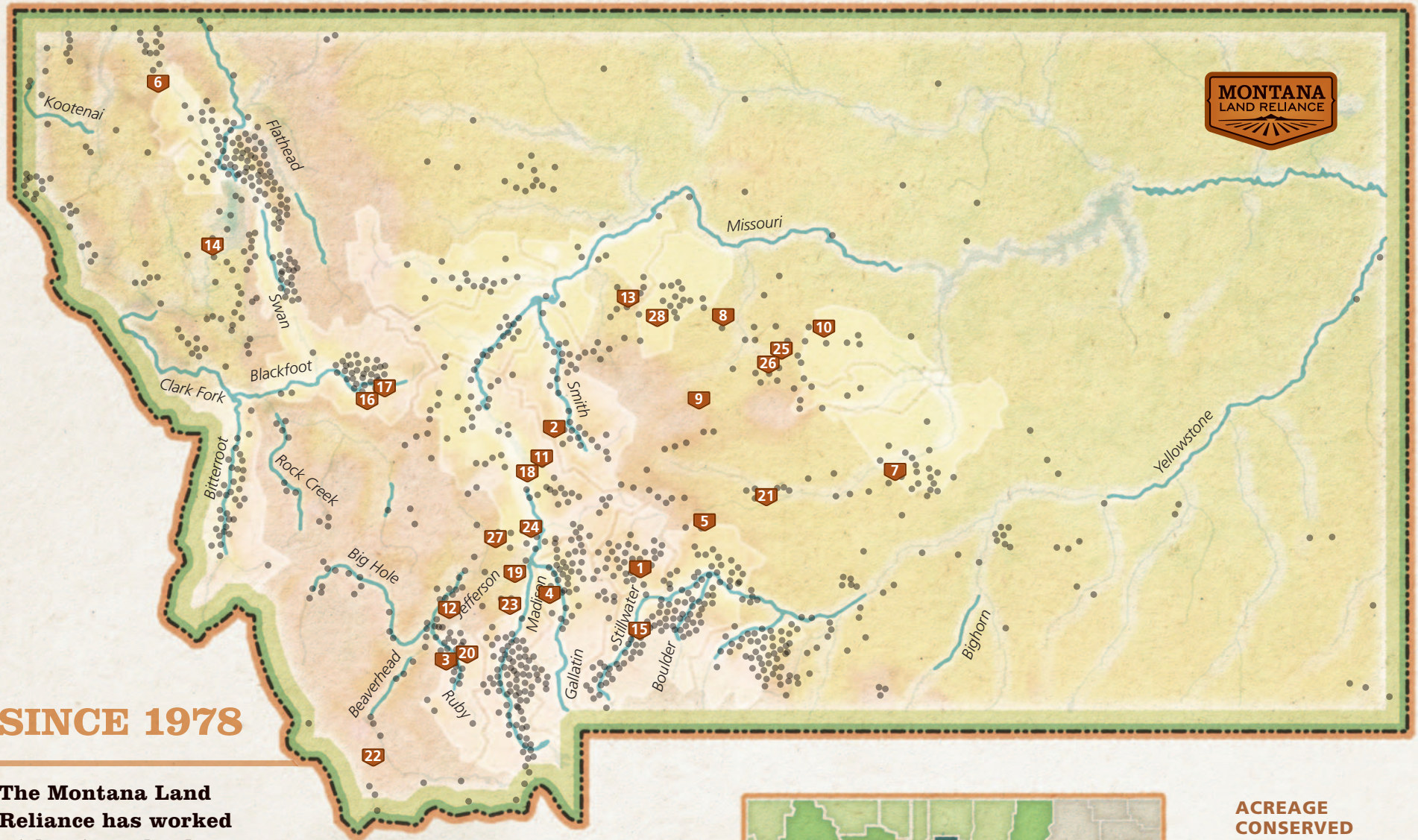
IN TOTAL

1,043
conservation
easements

1,462,569 acres
of agriculturally,
ecologically,
and historically
important land





2,102 miles
of streambank

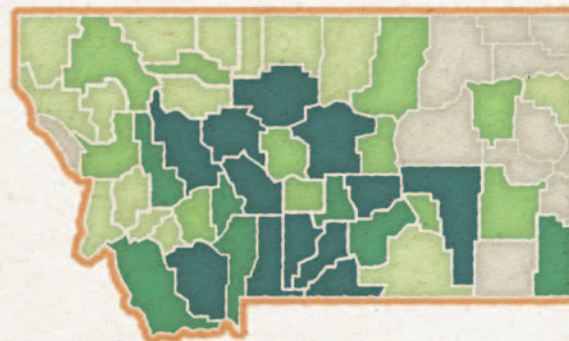
1	Atkinson, Michael P.	97
2	Benton Creek Ranch, LLC	1,169
3	George Alexander Bernhardt, Sr. & Anne Harper Bernhardt Revocable Trusts	83
4	Brouwer Family Trust	168
5	Cayuse Livestock Company	13,325
6	Collins, Alan P.	131
7	R & S De Pauw & P.C. De Pauw Trusts	640
8	Donaldson, Lynn	1,243
9	DTC Ranch, LLC	3,342
10	Eklund, Linda J.	2,399
11	Field, Gregory W.	7,501
12	H Double C, LLC	6,343
13	Little Belt Ranch, LLP	240
14	Loon Lake Family Ranch, LLC	19,926
15	Luder, Andreas	97
16	Mannix Brothers, Inc.	551
17	Mannix Brothers, Inc.	801
18	McNeal, Allen F.	350
19	MJ Home Place, Inc.	856
20	Peterson Ranch, LLC	2,905
21	Stephen Platt & Alicia Stickney Trust	105
22	Red Rock Springs Ranch, LLC	2,254
23	Titus 22, LLC	4,299
24	VanDyken, Richard B. & Halane B.	609
25	Walters, Ronald J. & Laura L. Bennett	474
26	Walters, Ronald J. & Laura L. Bennett	506
27	Bill Williams Family Trust	1,751
28	Windy Bench, Inc.	1,867







SINCE 1978

The Montana Land Reliance has worked with private landowners all across Montana to meet their conservation goals, including the protection of major watersheds critical to agriculture and wildlife habitat.

-  EASEMENTS IN 2025
-  EASEMENTS 1978-2024
-  MAJOR WATERSHEDS
-  BLUE-RIBBON TROUT STREAM



ACREAGE CONSERVED BY COUNTY

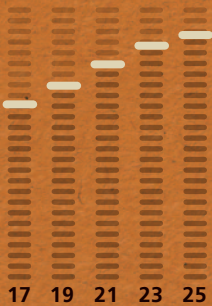
-  1-10,000
-  10,001-25,000
-  25,001-50,000
-  More than 50,000

AGRICULTURAL HERITAGE

Fifty-eight million acres of Montana's lands are in agricultural production. The protection of these working farms and ranches is critical for the preservation of the state's rural communities and agricultural economy.

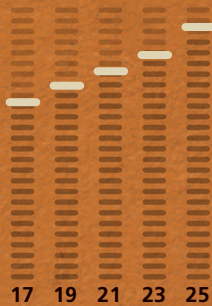
TOTAL CROP/HAY/
PASTURE ACREAGE
PROTECTED

239,646



TOTAL FOREST/
RANGE ACREAGE
PROTECTED

1,222,923



Todd Klassy

WILDLIFE LEGACY



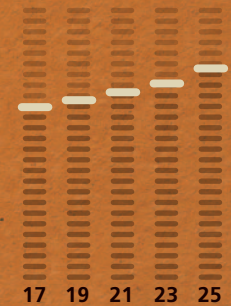
Northern Pintails

Donald M. Jones

The preservation of private lands in Montana is key to protecting vulnerable habitat that allows for the diversity of wildlife you can only find in Montana.

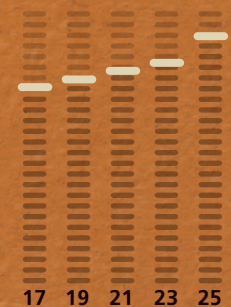
TOTAL WETLAND
ACREAGE
PROTECTED

51,551



TOTAL ELK
HABITAT ACREAGE
PROTECTED

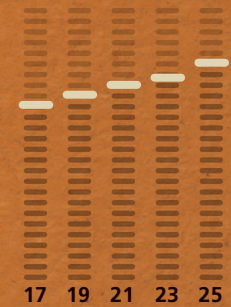
699,881



WATERSHED PROTECTION

Private lands make up 62% of Montana's watersheds. Conserving watersheds supports family farms and ranches, a vibrant recreation industry, wildlife habitat, and miles of rivers and streams.

TOTAL MILES OF STREAMBANK PROTECTED
2,102



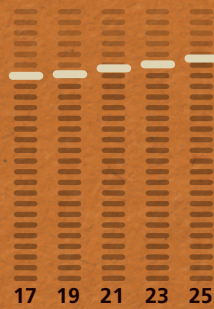
Westslope Cutthroat,
Flathead River

ECOSYSTEM PROTECTION

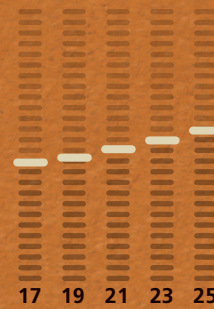
Private lands contain some of the best habitat found in Montana. Conserving these places is vital to ensuring our ecosystems remain healthy and intact.



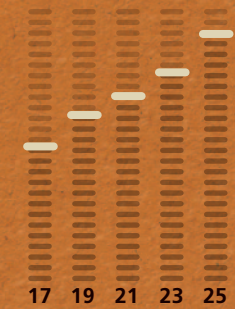
A
NORTHERN
CONTINENTAL
DIVIDE ACREAGE
PROTECTED
21,570



B
GREATER
YELLOWSTONE
ACREAGE
PROTECTED
365,100



C
NORTHERN
GREAT PLAINS
ACREAGE
PROTECTED
595,784



Paradise Valley

50 YEARS OF CONSERVATION

**CELEBRATING
MONTANA'S LEGACY
OF PROTECTED
LANDSCAPES**

In the spring of 1975, Montana took a landmark step toward protecting its private working lands, wildlife habitat, and scenic open spaces.

With the passage of the Montana Open Space Land and Voluntary Conservation Easement Act in April of that year, state lawmakers created a new way for landowners to permanently conserve their land without giving up ownership, productivity, or independence.

This legislation established the legal foundation for conservation easements and, in doing so, introduced a powerful, voluntary tool to safeguard Montana's landscapes for future generations.

At the time, the idea was both practical and visionary: start with private property rights, respect landowner choice, keep working lands working, and ensure that open space could endure even as Montana grew and changed. Before the Act's passage, voluntary conservation of privately owned ranches, farms, forests, and river corridors lacked clear statutory support. Landowners who wanted to protect their land for the long term, while retaining ownership, had few legal tools to do so.

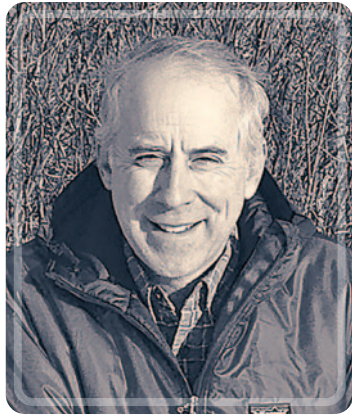
Getting the Act passed was no easy feat.

The legislation failed to gain enough support to pass in 1974, and its eventual success the following year reflected a more collaborative approach – one built on stronger statewide partnerships among landowners, agricultural interests, industry, legislators, attorneys, and conservation advocates who worked together to refine the language and build trust from the bottom up.

Andy Dana, land conservation attorney and former counsel for The Montana Land Reliance (MLR), recalled the effort it took to pass this historic legislation:

“Building on the momentum created by Montana’s newly adopted Constitution in 1972, the earliest proposed conservation easement bill sought to integrate private land protection with a public parks statute. That draft bill, introduced in 1974, passed the Montana House with broad support, but concerns were raised in the Senate by large corporate landowners about the lack of flexibility to adapt private land management activities to unforeseen future circumstances. The bill accordingly died in the Senate in the spring of 1974.

continued...



“Montana’s conservation easement laws are grounded in the ethical belief of its farmers and ranchers from all corners of the state that voluntary land and resource conservation on private lands should be encouraged and rewarded.”

–Andy Dana

Uniquely in Montana’s history, the legislature met a year later in 1975. Advocates set to work between the legislative sessions to engage with and address the concerns of industry and larger corporate landowners. What emerged was a revised bill that distinguished conservation easements from aspects of the public parks statute and emphasized the sanctity of private property rights.

The revised bill passed the 1975 legislature with broad support from virtually all sectors of Montana society, empowering landowners for the first time to exercise their private property rights, voluntarily, to conserve their private lands for public benefit while still retaining ownership for themselves and future generations.”

The Montana Open Space Land and Voluntary Conservation Easement Act remains largely unchanged, explicitly authorizing conservation easements and setting clear standards for their use. The Act created a tool that aligned stewardship with long-term protection, honoring the deep connection between Montanans and the land while providing permanence and legal certainty.

Fifty years later, the results are visible in the wide-open landscapes that still stretch to the horizon, the river corridors that remain undeveloped, and the working farms and ranches that continue to anchor rural communities. Montana’s private landowners have embraced this tool, partnering with land trusts statewide to conserve over three million acres of private land and making Montana a national leader in private land protection.

“Montana’s conservation easement laws are grounded in the ethical belief of its farmers and ranchers from all corners of the state – and in a spirit of responsibility manifested by industry leaders at the time – that voluntary land and resource conservation on private lands with minimal governmental involvement should be encouraged and rewarded,” added Dana. “Our approach is relatively uncommon in the United States, but it has fit Montana perfectly through the decades, resulting in unprecedented land conservation successes.”

The Montana Land Reliance is proud to be part of this story. Our founders, **Christine Torggrimson and Barbara Rusmore**, were part of the team that passed the Act, and MLR was established in 1978 shortly after its passage. Since then, MLR has partnered with over 1,000 families to protect nearly 1.5 million acres of working land and open space across Montana. From irrigated valleys to mountain foothills and wide-open prairie, landowners have chosen conservation easements to ensure their land remains whole, supporting agriculture, wildlife, and the way of life that defines this state.





It all had to start somewhere. It was **Ed Rosenthal** who had the courage in 1978 to take the decisive step of donating MLR's first conservation easement on his land in the Blackfoot River drainage of northwestern Montana. This occurred at a time when land trusts were relatively new and unknown.

"I never considered that I might be taking a risk in being the first person to donate a conservation easement," Rosenthal said in MLR's 1999 Annual Report. "What was important to me was that I loved the land. I never felt like I owned it, but that I was only borrowing it from future generations and needed to protect it for them."

Since then, many more landowners have joined the MLR family, united by a shared interest in protecting agricultural lands and scenic open space. And conservation easements have allowed working lands to remain just that: working. Cattle still graze

protected grasslands. Crops are still planted and harvested on conserved ground. Wildlife continues to move across large, connected farms and ranches. These places are not frozen in time; they are living, evolving lands shaped by the stewardship of private landowners.

As we celebrate the 50th anniversary of the Act, we also recognize that its work is far from finished. Population growth, rising land values, changing commodity prices, and accelerating development pressures continue to shape Montana. Every day, agricultural lands and wildlife habitat are at risk of being lost or fragmented in ways that cannot be undone.

The Act gave Montana a powerful tool, but tools only work when they are pulled out and put to use. Protecting open lands into the future will require continued public support, strong leadership, and enduring partnerships with landowners who care deeply about the land they steward. It requires a shared commitment to honoring this state's legacy of open, working lands, recognizing that today's choices shape tomorrow's Montana.

As we celebrate this milestone, we also look ahead with purpose. The success of the past half-century challenges us to keep showing up – for the land, for the people who depend on it, and for the generations yet to come. The Montana Land Reliance is proud to help carry that legacy forward and grateful for the role so many have played in protecting the open spaces that make Montana home.



Protecting open lands into the future will require continued public support, strong leadership, and enduring partnerships with landowners who care deeply about the land they steward.

Rocky Mountain Front



LOON LAKE FAMILY RANCH

Driving off the beaten path outside of Polson, time winds back 50 years. Wide open fields of native grasslands stretch as far as the eye can see, and the Flathead River glimmers faintly along the distant horizon.

Loon Lake, an enclosed 215-acre alkali lake and the ranch's namesake, lies still and white, so calm it could easily be mistaken for a patch of snow.

That this landscape remains so open is no accident. It reflects decades of deliberate choices made by a family learning, adjusting, and relying on each other to keep a working ranch whole.



2025
CONSERVATION
AWARD

A DREAM OF RANCHING

Long before Montana became home, Mac Binger knew he wanted to ranch. It was an idea he had discussed with his wife, Pat, as a new life they might build together. After leaving the Navy in 1970 and attending the Agriculture School at the University of Minnesota, Mac found himself searching for something more grounded.

He had spent some time on a sheep ranch in the Australian Outback during his final tour with the Navy and liked what he saw. “I’ve always enjoyed working with equipment, being outdoors, and being my own boss, and I knew I wanted to work with animals,” he recalled. “So, I started looking for a ranch.”

With this experience and his education in hand, Mac’s dream started to move forward, in large part because Pat could see herself in it, too. Minnesota, known for dairy farms, offered little opportunity for large-scale ranching, so the pair began looking west. Montana felt different – land was more affordable, the scenery more captivating, and ranching there seemed not only possible, but promising.

Mac began traveling on weekends, touring ranches across eastern Montana with the help of a realtor. Each trip ended the same way: he returned home and reported back to Pat. And each time, after listening carefully, she shook her head. They weren’t just buying land, they were choosing where to build their lives.

“Like thousands of other young Americans in the 1970s, we were pursuing our dream. Our dream was a little more involved than just beginning our family or moving into our own home – we were leaving our urban roots, our family, friends, and everything familiar and dear to us. –Pat Binger

After several unsuccessful trips, their realtor suggested a different option, this time west of the Continental Divide. Near Polson, this ranch checked all their boxes: 5,000 acres, relatively close to town, good schools, and a community where a family could take root.

They purchased the ranch in 1972, piled into their pickup truck with their first daughter, Erika, and headed west.

LEARNING THE HARD WAY

The early years on the ranch brought a steep learning curve. When they bought the property, it came with cattle owned by Jack Linkletter, who split the calf crop income with them. The arrangement gave Mac an opportunity to learn, and he sought out additional mentors anywhere he could – neighboring cattlemen, a trusted extension agent in Ronan, and books. Lots of books.

But learning their new way of life wasn’t just Mac’s work – every decision affected the whole family.

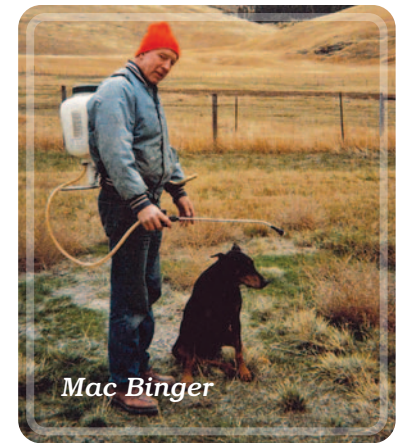
They had purchased the ranch in winter, and when spring arrived, it revealed overgrazed pastures and widespread invasive weeds.

At first, weed control was aggressive. Drawing on his Navy aviation background, Mac learned to fly helicopters in Kalispell so he could spray weeds himself rather than hiring a firm from Missoula. For 20 years, he took to the skies to fight weeds, often helping neighboring ranches as well.

“As Mac says via a sign on our property, ‘Weed-free means: more grass, more wildflowers, better land values.’ Our ranch is covered in wildflowers with nutritious grasses that our animals thrive on. –Pat Binger

When she wasn’t helping Mac on the ranch, Pat had plenty of duties of her own. She was a member of Western Montana Cattlewomen, a 4H leader, active in her church, and supportive of the arts, having commissioned a sculpture of Petra, the Flathead Lake Monster, for the city of Polson to enjoy. As she and Mac welcomed two more children – Meghan and Ben – she was also busy creating a home for the growing family.

The three children grew up moving cattle, bottle-feeding calves, putting out the occasional fire, and absorbing lessons about self-reliance, cooperation, and responsibility. Their upbringing shaped them – not necessarily into ranchers, but into adults who understood hard work and commitment.



Mac Binger

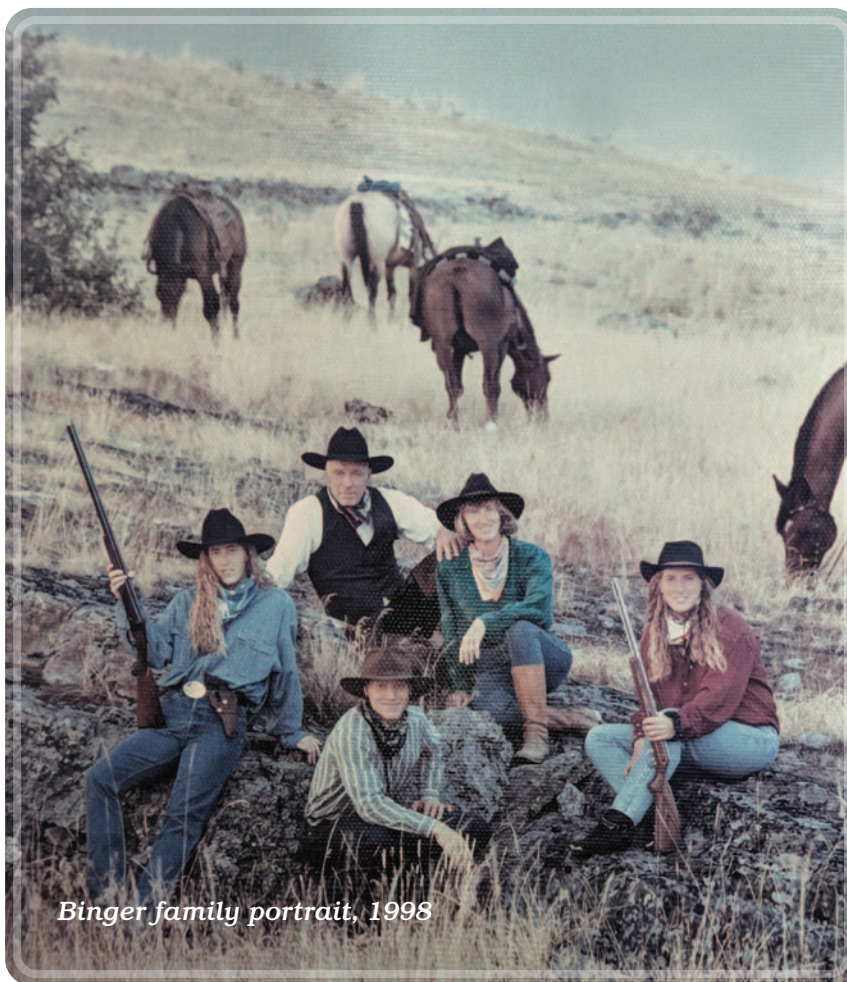
continued...

There were plenty of challenging days, too – days when equipment broke, weather turned, and the land itself tested them.

Mac recalled one bitterly cold morning hauling hay after weeks of freezing temperatures. Certain the ice was thick enough, he decided to take a shortcut across Loon Lake with the tractor and feeder. What he didn't realize was that an underground spring kept one stretch deceptively soft. The ice gave way, and the tractor dropped through and sunk into the mud of the shallow lake.

Mac knew that getting it out wasn't a one-man job, so he headed back for help. Together, he and Pat returned with their biggest tractor, their D-4 Caterpillar, and their strongest tow chains. For four hours, they worked together to free the machine, Pat driving the Cat and Mac running between the two tractors. Moments like this defined their life together on the ranch, where success didn't come from independence alone, but from knowing the other person would show up, take the wheel when needed, and stay until the work was done.

Over time, their management on the ranch evolved. Spraying became more targeted and strategic, grazing practices shifted to improve grass health,



Binger family portrait, 1998

and stocking rates grew more conservative. Instead of maximizing cattle numbers, Mac learned the value of flexibility – leaving room to respond when tough years inevitably arose.

“Ranching is very cyclic, and it would take us a couple of years to establish our own rhythms. These first years were learning years for us. We needed to know how things worked before we could make informed decisions about what could be changed and improved upon and what had to be left alone.” –Pat Binger

STEWARDSHIP OVER TIME

More than five decades later, all their hard-earned knowledge defines how the ranch is managed today. Water development helps disperse cattle and balance grazing pressure. Pastures are sized appropriately and rested intentionally. Weed control follows a ten-year plan. Grass health comes first.

“I try to be aware of the wear and tear cattle put on the ground,” Mac said. “Don't overstock. Watch the rainfall and temperatures. Leave it better than you found it.”

That ethic extends beyond livestock. Wildlife has always been part of the picture here. Elk move freely across the ranch, deer are abundant, raptors patrol the skies, and bluebirds nest along the road in noticeable numbers, punctuating the landscape with bright flashes of blue.

“I learned quickly that being a rancher and a rancher's wife was an all-consuming role. Every season on the ranch is the busiest.”
–Pat Binger

Today, Mac's pace is different by choice. With his three children pursuing other paths, a neighboring rancher now leases the property for their cow-calf operation.

“They're doing a great job,” Mac said, “and I still get to go up and do the work that I enjoy.” For him, this means fixing fence, improving water systems, producing a little hay, and managing weeds – from the ground these days.

12/8/25

AFTER NURTURING OUR LAND FOR 52 YEARS THROUGH UPS & DOWNS OF THE COW/CALF MARKET WE, AS A FAMILY, DECIDED TO PRESERVE THIS PRECIOUS PIECE OF MONTANA OPEN RANGE BY A CONSERVATION EASEMENT ON THE PROPERTY.

WE KNOW DOING THIS WILL PRESERVE AN OPEN VISTA OF THE MISSION MOUNTAINS AND FLATHEAD RIVER IN PERPETUITY FOR OUR COMMUNITY AND FOR VISITORS TO MONTANA.

THANKS TO THE MONTANA LAND RELIANCE FOR THEIR EXPERT GUIDANCE ON THIS UNDERTAKING.

Mac Binger



View of Flathead Lake from the north end of Loon Lake Ranch

David J. Heine and Associates

KEEPING THE RANCH WHOLE

The idea of a conservation easement didn't come all at once. When Mark Schiltz, MLR's Western Manager, first reached out to the family around 2011, it started as a conversation. The most important part of developing a conservation easement is understanding the landowner's goals for the land, and over the years, Mac and Pat's shared vision began to take shape.

One thing was always clear: they never wanted the ranch subdivided. Loon Lake Ranch had grown to more than 15,000 acres, and they had watched as development crept closer – open spaces shrinking, views disappearing, land fragmented beyond repair.

"We're not making any more land," Mac stated. "It needs to be protected."

Sadly, Pat passed away in 2025 before the easement was completed. She is not here to tell this story herself, but through her memoir, *Rancher's Wife: From Minneapolis to Montana*, her voice remains part of the story of this place. Her reflections capture the seasons of ranch life – the challenges and joys of

building a life there, and the belief that caring for the land is both an obligation and a privilege.

Mac, Erika, Meghan, and Ben finalized the conservation easement together, knowing they were carrying forward something Pat believed in. It reflects a commitment she and Mac held: to leave this place better than they found it, for agriculture, for wildlife, and for anyone who drives by and feels the relief of open space.

The family sees the easement as the best way to keep the ranch intact, working, and open for generations to come. For Mac, it's not an ending, but the culmination of a lifetime of shared effort.

"Thanks to MLR, we got a good conservation easement in place after a lot of work," he said. "It's my duty to protect the land and do it in the best way I can, and I think I'm passing something on that everybody can benefit from."

In recognition of their outstanding commitment to sustaining productive agricultural lands, conserving open space, and supporting wildlife habitat, MLR is

pleased to present the Binger Family with the 2025 Conservation Award. Thanks to their stewardship, Loon Lake Ranch stands as one of the finest examples of open space conservation in the state.

For the public, the impact is both subtle and profound. Because of this easement, the drive outside Polson will always feel the same: unbroken grasslands, wide open views, and the river glimmering faintly along the horizon.

The ranch is a testament to partnership, and to two people who left everything familiar behind to build something lasting together. And because they did, when you turn off the pavement and head toward Loon Lake, it will still feel as though time has wound back 50 years – and always will.

"I am forever grateful that Mac did not give up ranching and his dream. I believe all this has provided a rich legacy for our family, and I am so thankful for the many wonderful memories our family has created on the ranch.

–Pat Binger



FOREVER MONTANA SOCIETY

The Forever Montana Society exists to honor those who have left a lasting legacy of conservation, and to inspire others to do the same.

With perpetuity in mind, the Forever Montana Society is open to all consenting MLR easement donors and to those who have provided for MLR's mission in their overall financial and estate plans. Their gifts will help sustain agricultural lands, fish and wildlife habitat, and open space for generations to come.

ABN Ranch
Arrington Ranch, LLC
Bartz, Tim & Trish
Berghold, Joanne & Billy
Bibler, Carol
Blanchet, Richard
Boyle, Rich & Jan
Brander, Linda
Burke, Steve & Gretchen
Byrne, Sam & Tracey
Chamberlin,
S. Wayne, MD
Conlon, Suzanne
Connell, Jeanne
Custer Battlefield
Preservation
Committee
Dale, John & Cheryl
Dietrich, Christian
& Michelle
Thomas G. Eppich Trust
Fauth Ranch;
KJ & Lindsay
Fauth & Family

Frazer, Eliza
& Barry Hood
Freeman, Jr., Lee A.
French, Dave & Priscilla
Giese, Monte & Jeanna
Gildroy, Gordon
& Mary Ann
Gingras, Paul & Sally
Goeddel, David & Alena
Guyette, Jim & Kay
Hall, Aldean
Hall, Barry & Eleanor
Hegnass, Paul
Henderson,
Jay & Janette
Hohenlohe,
Christian & Nora
Hutchins, Judith
Johnson, James & Sharon
Kalt, Joe & Judy Gans
Keifer, Daniel
Kellogg, Dennis & Kitty
Kelly, Francis J., MD
& Deloris L.

Kelly, Kathryn
Kenyon, Lynn
Kerkvliet, Joe, PhD
Kiesling, Bob
King, Donald
& Janemarie
Kress, Karen Bates
Laszlo, Jr., Andrew
& Paulette
Legg, William
Leuschen, David
Long, William
& Billie Miller
Mills, William A.
Montag, Kim & Jeff
Navratil, Gerald J.
& Maryellen
NN Land & Cattle
Perry, Joe L. & Debby L.
Pfeiffer, Steven B.
R.V. Ranch Co.
Guido Rahr Family
Ringling, Rock
& Bobbi Uecker

Ritchey, David & Sue
Roth, Jane R.
Sauerbier Ranches
Schatz, Deborah & Greg
Schmidt, Chester, MD
Schutz, Jeffrey H.
& Family
Shryer, Jeffrey H.
Smith, Carol
Smith, Michael
Spanjian, Kris
& Ray Gilbertson
Sullivan, Donald
Talcott, Terry
Taylor, Jim
& Valerie Anne
Teller Wildlife Refuge
Thorell, Carole
Torgrimson, Christine
Wilson, III, Kendrick R.
& Ann Jackson
Yorchak, Nicholas
& Molly Bauchmann

**Learn more about the
Forever Montana Society
at mtlandreliance.org.**

Pronghorn near Dillon

FAMILY OF FRIENDS

The Montana Land Reliance thanks the individuals and organizations that have contributed to its success during the past year. MLR also extends thanks to those who have asked to remain anonymous.

EASEMENT DONORS

Atkinson, Michael P.
Benton Creek Ranch, LLC
George Alexander Bernhardt, Sr.
& Anne Harper Bernhardt
Revocable Trusts
Brouwer Family Trust
Cayuse Livestock Company
Collins, Alan P.
R & S De Pauw & P.C. De Pauw Trusts
Donaldson, Lynn
DTC Ranch, LLC
Eklund, Linda J.
Field, Gregory W.
H Double C, LLC
Little Belt Ranch, LLP
Loon Lake Family Ranch, LLC
Luder, Andreas
Mannix Brothers, Inc.
McNeal, Allen F.
MJ Home Place, Inc.
Peterson Ranch, LLC
Stephen Platt & Alicia Stickney Trust
Red Rock Springs Ranch, LLC
Titus 22, LLC
VanDyken, Richard B. & Halane B.
Walters, Ronald J. & Laura L. Bennett
Bill Williams Family Trust
Windy Bench, Inc.

INDIVIDUALS

Abbott, Francis H., Jr., & Frances M.
Abernethy, Samuel F.
Adams, Christopher
Aitken, Gary
Amonette, James & Alexandra
Anderson, Rick & Laurie
Anderson, Shiell & Babs Brandfass
Anderson, Sky & Monica
Anderson, Tim
Angiolillo, Carol & Bruce
Armbruster, Sandra
Atkinson, Michael P. & Melissa P.
Avis, Freddy
Axtell, Barbara & Joe
Bales, Charles "Chip" C., IV,
& Anne Donovan
Banks, Ryan
Barker, Sally & Brian
Barnard, Mary Susan (Walker)
Barnosky, Neil & Gloria
Barrett-Pointer, Stephanie
Baucus, John F. & Nina
Baumler, Mark F., PhD
Bean-Dochnahl, Janet
Bell, Ronald S. & Kelly M.
Berg, Richard & Gayle
Berghold, Joanne
Berman, David & Sandra
Bibler, Carol & Jim Watson
Binger, James M. & Patricia
Bissell, Gael & Rick Mace
Bordsen, Marwiyah
Boudeman, Sherwood M. & Sharon C.
Boyette, Van R. & Susan Berger
Boyle, Rich & Jan
Bradbury, James D. & Elizabeth
Brander, Linda L.
Brim, Michael & Arlyne
Brock, Melanie
Brockway, Dean
Brown, Amy
Brown, Catherine & Bryan Walton
Bryan, Pamela R. & William L.
Bucklin, Nicholas & Marcela
Burke, Kathleen & Gary Clark
Butler, Amie F.
Byrne, Sam & Tracey
Campbell, Mary C. & Pamela A. Fuqua
Canine, Frances
Carlson, George A. & Frances I.
Carmel, Christopher
Carroll, Alan
Carron, John C. & Traci L. Telander
Carron, Reid & Rebecca L. Rom
Carton, John L. & Sallie
Cassell, John L. "Jay," Jr., & Gay Weake
Chamberlin, S. Wayne, MD
Chanania, Andrew



Big Hole River

Jason Savage

Chapman, Larry
Cholnoky, John & Amy
Christensen, Stephanie Ann
Chwillcek, Jerome & Caroline
Claiborn, Steve & Barbara H.
Clarke, Augusta "Gusty"
Clarke, Mike & Christine
Closs, William R. & Katharine M.
Cole, David & Peggy Osbourn
Collins, John, Jr., & Anne
Collins, Pom & Kathi
Colton, Shane D.
& Gina McIntyre-Colton
Cook, David B.
Cooperman, Michael & Anne Archer
Corbin, Parker & Hillary
Cornell, Stephen & Maura Grogan
Court, Jim & Virginia
Crank, Bob
Cribbs, Shelby
Cromley, Taya & Jim Messina
Crosby, Scott & Valerie
Cruz, William & Patricia

Cummings, Jim & Kathleen M.
Cunningham, Kurt
Curtis, Brian
Dale, John, Estate of
Dana, Andrew C. & Susan W.
Dana, Gordon
Dana, John L. & Margo
David, Clifford
Davidson, Karen & Steve Olson
Day, Sarah
Delgado, Vinny
Delger-DeMars, Lois & Jeff DeMars
Deveny, Tom W. & Kathy Knudsen
DeVries, Johanna
Di Francesco, Cynthia & Joseph Nangle
Dietrich, Carolyn & Gary
Dolan, Stephen & Ashley
Domaille, Mike & Nancy
Donovan, Richard & Ellen
Dorn, Joseph W. & Palmer
Droge, Glenn & Jenness
Eder, Jo Ann
Edwards, A. Clifford & Susan

Eklund, Linda
Elison, Glenn & Denise
Ellis, Janet H. & James C. Hansen
Emery, Bob & Dana Morton
Engebretson, Mark F. & Carol M.H.
Epple, Paulette J. & Andrew C.
Epstein, Stuart
Erwin, William A.
Etheridge, Nancy
Feckanin, John
Feldman, Kirsten
Felder, Micah
Field, Gregory W.
Fife, Doug
Fisher, Richard & Joanne
Fornwalt, Nick
Foster, Timothy E. & Ellen P.
Freeman, William H. & Elizabeth Joyce
Fryberger, Mark
Fuller, William P., IV, & Jennifer Beckett
Gainer, Dr. Devon
Garlick, Lawrence & Pamela

Garten, Anita W. & David B.
 Gathje, Dan
 Gerstacker, Esther Schuette
 Geyer, Thomas & Therese
 Gildroy, Gordon Joe & Mary Ann
 Gillam, Con & Daphne
 Gilmor, Zachary
 Gingras, Paul, DMD, & Sally
 Goeddel, David V. & Alena Z.
 Goldberg, Edward
 Gordon, Richard & Cheryl Watkins
 Gouaux, James E. & Elizabeth A. Oleson
 Gray, Randall & Nora Flaherty
 Greenblatt, Russell
 Grusin, David & Nancy E. Newton
 Guckenberger, David S. & June
 Guyette, James M. & Anita K.
 Guynn, Peter C. & Caroline C.
 Haag, Eric
 Hafer, W. Randall & Janna S.
 Haley, Ian
 Hall, C. Barrows & Eleanor L.
 Hamburg, Scott & Anna Zon
 Hansen, Karen L. & Mark D.
 Hansen, Paul & Elaine
 Hansen, Wayne
 Harris, Jerrold B. & Bobette J.
 Hawks, R.L.
 Hayes, George & Catherine
 Heaney, Vivian
 Heminway, John & Kathryn
 Herman, Sidney N. & Margaret D.
 Heyneman, John
 Heyneman, Susan, Estate of
 Hiaasen, Carl & Fenia
 Hibbard, Chase
 Hibbard, Scott & Gretchen
 Hickey, Ryan
 Highland, James A. & Susan
 Hill, Marilyn & Wayne
 Hoeck, Lauren
 Hoffman, Mark R. & Mary N.
 Hohenlohe, Christian C. & Nora R.
 Holdener, Kathy & Ron Paul
 Holland, Noel J. & Yvonne
 Horowitz, Mark
 Hoyt, David & Janyce
 Huempfnr, Michael & Cynthia
 Hurd, Robert N., MD, & Carol L.
 Hutchins, Judith
 Jackson, Roy & Gretchen S.
 James, David & Brooke Herter
 James, Pietro N. & Lynn A.
 Jamrack, Allida & William Denieris
 Jamruka-Wilson, Jan
 Jensen, Anne Dorris
 Johnson, Mary
 Jones, Richard D.

Jones, Tom & Alvira
 Jovick, Robert L. & Stacey
 Kaiser, James & Heather
 Kaiser, Kari
 Kalimian, Albert K. & Manda
 Kastner, Bradley
 Kellogg, Dennis & Katherine
 Kelly, Deloris L.
 Kelly, Kathryn & Bob Judd
 Kempff, Jonathan & Janet
 Kendall, Kate & George Scherman
 Kenyon, Chris
 Kidd, Matt & Sheena
 Kiesling, Bob
 King, Donald A., Jr., & Janemarie
 Kingman, Brett
 Kirchschrager, Diane & Robert
 Kluz, Nate
 Kohler, Cynthia
 Koningsberg, Jan & Christy
 Krause, Caroline
 Kress, Kenneth A. & Karen B.
 Kuhn, Walter, Jr., & Nancy
 Kulina, Thomas & Meri Stevens Kulina
 Kuntz, Gail & Terry Wheeling
 Kurtz, Willis & Caroline Lupfer
 La Seur, Carrie
 Lahey, Deborah & John
 Lalani, Sal & Carol G.
 Lammers, Emily & Bryan Dieffenbacher
 Lammers, John A.
 Lang, Denise & John
 LaPram, Stephen
 Larsen, Lisa A. & Raymond Flaherty
 Lauda, Ramona & Ben Shomper
 Leaphart, William & Barbara
 Lee, Cag & Pat Davis
 Leuschen, David M.
 Lieberg, Richard H. & Patricia A.
 Lindbergh, Land M.
 Livezey, Dale & Amy
 Loeb, Jeffrey & Margaret Beal
 London, Mimi
 Long, William & Billie Miller
 Longhart, Fred
 Luder, Andreas
 Luther, Jessie
 Lyons, Mary & Gordon
 Ma, Grace & Chris Hooper
 MacDowell, Rosalie A.
 MacGillis, Julie
 Mackay, Dwight & Margaret
 Mackley, Julie A.
 Mahoney, Dan
 Malarchick, Cathy
 Manne, Valerie
 Margolis, Heather & Tim Warner, Jr.
 Martin, Jessie
 Martin, Sandy & Anne

IN MEMORIAM

**Remembering friends who passed
 in 2025 and friends recognized with
 memorial gifts in the last year.**

Bales, Charles "Charlie"
 Binger, Patricia
 Bjergo, Jackie
 Braig, Robert A.
 Dahl, Anne
 Danforth, Fred
 Darling, Jim
 Duke, Mary Ellen
 Fellers, Trysten Mark
 Heine, Mary E.
 Heyneman, Susan
 Hollensteiner, James
 Hutton, William T.
 Kelly, Francis J., MD
 Lalani, Sal
 Levy, Paul
 Lyman, Dave
 Parker, Michael
 Raches, Chuck
 Roath, William
 Schleicher, Richard
 Vanzant, Leah
 Watson, Thomas
 Wellington, James & Julie

Matelich, George E.
 May, Karen
 May, Megan
 McCrum, Marcia Bull, MD
 McCurdy, Brian & Dalton
 McDermott, Edward T. & Emily Q.
 McGuane, Thomas F., III,
 & Loraine Buffett
 McIntosh, Christian & Kris
 McMichael, Finn
 Meyer, Neil & Dixie
 Miller, Deborah K. & John W.
 Miller, Lin & Megan
 Minton, Dwight C. & Linda
 Mitchell, D. Brent & Kathryn L.
 Montag, Jeffrey M. & Kim H.
 Montague, Chris
 Montford, Robert
 Moore, Jennifer

Morgan, Lance & Gloria Borger
 Munson, James
 Mutascio, Paul & Jill Gotschalk
 Naidich, Michele Levin
 Nehal, Dr. Kishwer S. & Dr. Adrian Fisher
 Nelson, Davilyn L.
 Nelson, Roger & Mary
 Nicholson, Alan & Nancy
 Norwood, Steve
 Nutt, Robert
 O'Dell, Donald & Inger
 Odegaard, Paul
 Ohman, Christopher C.
 & Tamara J. Uecker
 Olinger, Allen "Skip," Deborah, & Chris
 Olsen, George S. & Ellen Vogelsang
 Ostergard, Robert
 Oswood, Mark W. & Judith L.
 Owen, Kathryn J.

Owen, Russell & Jill
 Packard, Julie
 Palmer, Kelly & Jeremy Rizer
 Palmer, Mary Kay & Paul Nassetta
 Parker, Paul & Anne
 Patterson, Thomas A. & Kristi
 Paul, Doc
 Paul, James
 Paulek, Mark & Jeanne M. Hamilton
 Pellegrini, Gary & Jennifer L. Holifield
 Perkins, David D. & Nancy MacKinnon
 Peterson, Gei Lucy
 Peterson, Jess
 Pfeiffer, Steven B.
 & Kirstin Reagan Pfeiffer
 Phelps, Chris & Margaret Hollow-Phelps
 Phillips, Landon
 Placek, David & Nelle Newton
 Ploder, Steven E. & Lisa A.



Alexis Bonagofsky

Poett, Henry W., III, & Cynthia S.
Polemis, Michael A. & Barbara M.
Prewitt, Judy & George
Pribyl, Katie
Pribyl, Rod & Julie
Proops, Jay D. & Mary K.
Raible, Joe & Barbara
Rasmussen, Robert S.
Rauner, Bruce V.
& Diana Mendley Rauner
Reed, Glenn W. & Barbara W.
Reed, Tom
Regan, Ted & Nancy
Reich, Miranda
Riccobono, Andrew
Rice, Errol & Kelley Edwards
Richards, S.F. (Suz) & Bruce William
Richtmyer, Lindsey & Tory
Rietz, Richard & Helen
Ringling, Rock & Bobbi Uecker
Roark, Carol Lee
Roe, Sandra B.
Rokita, Rusty & Deborah A.
Rolfing, Mark & Debi
Rolfing, Steve & Sue
Romatowski, Peter J. & Suzanne Bonner
Rosenthal, Edward S.
Rostad, Phil & Joan
Roth, Jane R.
Royer, Amy & Wilfried "Fritz"
Ruedisili, Robert D.
Rundquist, John
Ryan, William B.F.
Sadler, Jim & Kitty Ordway
Sanzi, Bruno
Satterthwaite, Frank & Janet
Scharnberg, William & Kathleen Reynolds
Schiltz, Mark
Schiltz, Sharon
Schleicher, Joan Morgan
Schmidt, Chester, Jr.
Schulein, Benjamin
Schulein, Dr. Mark & Dr. Genevieve Reid
Schulman, Dan & Summerly
Schutz, Jeffrey & Charlotte Caldwell
Schwab, Charles R. & Helen O.
Seal, Christian G. & Nichole Pilakowski
Seidel, Robert & Judith
Selinger, Joseph J., Jr., & Noreen
Shade, Darren
Shepherd, Michael & Sarah
Sherman, Roger & Jennifer Schab
Shore, Stephen & Virginia
Silverman, Constance & Paul
Simonds, Edward T. & Margaret R.
Sollers, Joseph Sedwick, III, & Magge
Sorensen, Jerald L. & Patti
Spanjian, Kris & Ray Gilbertson
Stanek, Matthew

Steiner, Anna & Ernest
Stephens, Ralph C. & Betsy W.
Stephens, Vicki
Stevenson, Carol S.
Stokes, Katie & Matt O'Dell
Stolp, Staci
Strawn, James & Eve
Strawn, Kaci
Suenram, Jacy
Szczyplinski, Mark
Taylor, James H. & Valerie Anne
Taylor, Mark
Tempest, Jennifer Phelps
Thisted, Elizabeth G.
Thorell, Carole C. & Lennart M.
Tingle, Jeff
Tingley, Nathaniel
Tippo, Josie, Cinna,
& Jake the Wonder Dog
Trimbath, Will
Tsiang, Judith A.
Tureck, Judy & Hugo
Vana, Jordan
Vana, Judy
VanDyken, Richard B. & Halane B.
Vanzant, Steven
Varley, Nathan
Vermillion, Dan & Lynn
Vogel-Wright, Hedwig
von Avis, Charlie D. & Emmiliese
Wallner, Fred & Mary Kay
Walsh, KC & Karen
Walter, John & Wendy
Watson, Lorraine & Lorna Krause
Wayman, Karen & Thomas Gaa
Weiss, Thomas
Weissman, Irving, MD,
& Ann Tsukamoto-Weissman
Wellenstein, Michael S. & Cori E.
Wentz, Anne Colston, MD,
& Dennis K. Wentz, MD
West, Brad
Wheeler, Col. James S. "Scott" & Jane
Whitney, Arthur & Sandra
Wiese, Jessie
Wilkins, Thomas & Betty
Williams, Burton & Joan Brownell
Williams, Conrad "Duke"
Williams, Patrick
Wilson, Suzanne
Wortman, Kirk
Wright, Theodore M. & Elizabeth H.
Wrinkle, Cynthia & Curt
Yablonski, Brian & Kim
Yager, Andrew
Yost, Erin
Zackheim, Miriam Hecht & Ivan
Zaideman, Robert & Julie

FOUNDATIONS, COMPANIES, AND ORGANIZATIONS

1111 Foundation
5 Spring Foundation
Acts 20:35 Fund
AGL Foundation
Allen Family Foundation
Donald W. & Margaret M. Anderson
Foundation
Avis Charitable Fund
Beartooth Group
Berg Family Ranch
George Alexander Bernhardt, Sr.
Revocable Trust
The Bibler Foundation, Inc.
Arthur M. Blank Family Foundation
Bowling Legacy Fund
Bradbury Charitable Fund
The Broadbent Family
Foundation, Inc.
Brouwer Family Trust
Buckridge Family Foundation at the
Montana Community Foundation
Cahill Family Fund
Cayuse Livestock Company
Coddon Family Foundation
Peter Corbin Charitable Fund
Cote Family TGS Foundation, Inc.
Coxe Family Fund
Cromley Messina Foundation
Crosby Analytics
Davis Family Charitable Trust
Sarah W. Day Revocable Living Trust
Thomas E. and Barbara C.
Donnell Family Fund -
The Donnelley Foundation
Joseph W. Dorn Charitable Fund
The Dovana Foundation
Emmett Foundation
Fanwood Foundation
Fauth Ranch, LLC
Fay Ranches, Inc.
Bryan Finkle Charitable Account
First Cornerstone Foundation
First Interstate Bank
Flying S Title & Escrow of Montana
The Folley Family Foundation
Geraldine C. & Emory M. Ford
Foundation
Franklin Templeton
Robert & Michelle Friend
Philanthropic Fund
Front Range Law
Samuel Gary Jr. Family Foundation
Gates of the Mountains Foundation
Carl & Esther Gerstacker Fund

Give Lively Foundation
Fred Goldberg Family Foundation
Golden Eagle Construction
Goodwin Family Giving Account
Grey Rocks Foundation, Inc.
Hall & Hall, Inc.
Herndon Giving Fund
Holdfast Collective
James & Wanda Hollensteiner
Foundation
The Horn Foundation
Cynthia Cox Huntting Trust
Huppert, Swindlehurst
& Woodruff, PC
Ingalls, John G.,
Revocable Living Trust
Jackson Contractor Group
Johnson Family Fund
The Willard T.C. Johnson
Foundation, Inc.
Robert A. Johnston Foundation
Kaufman Family Foundation
J C Kennedy Foundation, Inc.
Kirkwood Foundation
Larsson Danforth Family
Foundation
Lechner & Stauffer, Inc.
William & Judith Legg Fund
Little-Kittinger Foundation
Lone Mountain Land Company, LLC
Loon Lake Family Ranch, LLC
Lovett-Woodsum Foundation
The Jerry and Karen Mathwig Fund
KHR McNeely Family Foundation
Merlin Foundation
MJ Home Place, Inc.
Montana Ranch of Bigfork, LLC
Montana State Employee
Charitable Giving
Moonlight Basin
Mott-Warsh Revocable Trust
Mound Prairie Ranch, LLC
M.J. Murdock Charitable Trust
The Nalen Foundation
National Fish and Wildlife
Foundation
Eric H. Newman
Charitable Gift Fund
Nova Family Gift Fund
Nutt Family Foundation
Odegaard Law Group, PLLC
One Valley Community Foundation
Park County Community
Foundation

Jordan Park Mission 1st Fund
Peterson Ranch, LLC
PGN Foundation
Phillips Realty
Plank Stewardship Initiative
Pleiades Foundation
PMD Ranch, LLC
The Pocket Foundation
Pond Family Fund
The Povich/Chung Family
Foundation
Ranch Resources
Rao Family Giving Fund
Reed Family Foundation
RMW Foundation
Donald & Carol Roberts Foundation
Santa Family Charitable Fund
Schab-Sherman Frijoles Fund
The Schlinger Family Foundation
Sheckleton Charitable Trust
Sheckleton Family Giving Account
Sommers-Flanagan Family Fund
Suenram & Bergeson, PC
Swan Land Company
Swan River Valley Real Estate
Tapeats Fund
Taylor Luther Group
Team 17 Real Estate, LLC
Terex Corporation
John & Carry Thacher Family Fund
The LeRoy Thom, Jean Thom
and T-L Foundation, Inc.
Richmond H. Thomason
and Sarah G. Thomason Trust
Titus 22, LLC
TKW Charitable Fund
Tordik Wildlife Foundation
UK Online Giving Foundation
Matthew A. and
Susan B. Weatherbie Foundation
James Wellington & Family
Gift Fund
Norman C. Wheeler & Associates
The Wildwood Foundation
Bill Williams Family Trust
Willie's Distillery, Inc.
Willinphila Foundation
Windy Bench, Inc.
Yellowstone Mountain Club, LLC
Zackheim Charitable Account



2025 FINANCIAL REPORT*

Thanks to the support of its generous donors, MLR continues to build on its conservation legacy by partnering with landowners to conserve significant new acreage across Montana.

REVENUE

Grants for the purchase of conservation easements	\$ 18,057,537	70
Contributions, grants, and events	\$ 6,173,536	24
Program and other revenue	\$ 1,519,846	6
Total	\$ 25,750,919	

EXPENSES

Conservation easement purchases	\$ 21,465,950	82
Program expenses	\$ 3,585,999	14
Management and general	\$ 638,336	2
Fundraising	\$ 518,809	2
Total	\$ 26,209,094	

*This financial information is unaudited. Final financial statements and accompanying auditor's report will be available on request from the Helena office after August 2026.

MLR and its support organization, Montana Land Reliance Foundation* (MLRF), diligently steward assets to support MLR's perpetual conservation efforts and stewardship obligations.

MLR and MLRF work with investment managers to steward investment portfolios in a conservative manner to ensure MLR's financial future.

THE MONTANA LAND RELIANCE

General Fund	\$ 7,631,741
<i>Short-term operating reserves.</i>	

Land Acquisition Fund	\$ 12,958,514
<i>Fund to purchase conservation easements.</i>	

MONTANA LAND RELIANCE FOUNDATION

Land Protection Fund	\$ 32,289,382
<i>Defend and steward land already under easement.</i>	

General Fund	\$ 16,705,894
<i>Long-term operating reserves.</i>	

Conservation Fund	\$ 4,011,826
<i>Permanent irrevocable endowment.</i>	

Traditions Fund	\$ 73,045
<i>Permanent irrevocable endowment designed to accept planned gifts.</i>	

*a 509(a)(3) support organization to The Montana Land Reliance



RUBY HABITAT FOUNDATION

The Ruby Habitat Foundation¹ is dedicated to preserving and enhancing the natural resources and social and economic makeup of the Ruby Valley and southwestern Montana.

FINANCIAL REPORT

Income ²	\$ 1,221,023
Expenses	\$ 426,234
Net Income	\$ 794,789
<hr/>	
General Funds	\$ 153,931
Gilman Family Scholarship Fund	\$ 138,160
Rural Heritage & Open Lands Fund	\$ 158,231
Hill Education & Outreach Endowment	\$ 228,766
Woodson Ranch Endowment	\$ 11,811,568
Fixed Assets	
Improvements & Equipment	\$ 324,285
Land	\$ 9,446,992
Visitor Center Building & Donated Items	\$ 48,731
Total Assets as of 12-31-25	\$ 22,310,664

¹a 509(a)(3) support organization to The Montana Land Reliance

²Includes \$857,766 of investment income

As I look out over the Ruby Valley in February, the countless shades of brown paint a portrait showing each season has its own beauty and character. The stillness that can come with winter somehow adds an extra flavor to the landscape before me. Before long the landscape will begin to change to shades of green and the many returning birds will fill the air with sounds of a new life, a new portrait, a new season.

At Ruby Habitat Foundation (RHF), 2025 experienced its own season of change. Our long-time outreach coordinator, Dave Delisi, retired in June. As I think of Dave, his passion for Woodson Ranch and RHF was unmatched. His engaging manner with each person endeared him to each one he came into contact with. I am very thankful for his years of inspiration and am sure his next adventure will touch many. And now the change. Sunni Bodøgaard has joined RHF as the Program Director and with her comes many years of experience in conservation and natural resource work. I was fortunate to observe her getting 15–20 school kids to focus on river dynamics at Kids River Resource Day; all of them being excited to learn. She is bringing the next season to RHF.

RHF is continuing to demonstrate the importance agriculture plays in preserving and improving our natural resources. Besides feeding our nation, agriculture provides countless amounts of habitat

for all our wildlife neighbors. Soil health is of utmost importance to agriculture and our total environment. RHF is conducting trials to better understand and add to the knowledge and practices to improve the soils that provide for us all. These are long term projects, so expect to keep hearing more in the years to come.

Education has always been at the top of RHF's priorities. 2025 produced 2,021 visitor days on Woodson Ranch and while not all of those were focused specifically on education and outreach, each person cannot help but gain a sense and appreciation for the importance of how we care for our natural resources. We have specific educational programs throughout the year that reach young and not so young from across the nation. Sunni has started a partnership with a local school for a hands-on learning experience. What a great idea.

In writing these thoughts about RHF I am humbled by the many people that partner with RHF to make this organization continue to move forward.

There are those who volunteer their time and energy. Those who inspire. Those who donate their hard earned money. Each one is highly valued and appreciated. None of this would happen without you. Thank you.

–Neil Barnosky, RHF Chairman



RHF is continuing to demonstrate the importance agriculture plays in preserving and improving our natural resources.

BOARD OF DIRECTORS

Group A: The Montana Land Reliance

George Olsen; Rock Ringling (Vice-chairman); Katie Stokes

Group B: Woodson Family

Michael Arslanian; Russell Mitts (Secretary-Treasurer); Douglas Mitts; Jessica Vanderpool

Group C: Ruby Valley Community

Neil Barnosky, Chairman; Bruce Peterson; Steve Wood

Executive Director

Dan Durham

Outreach Coordinator

Sunni Bodøgaard

DIRECTORS, STAFF, & TRUSTEES

BOARD OF DIRECTORS

Shane Colton
President
Attorney
Billings, MT

Taya Cromley
Vice President
Behavior Health
Consultant
Clyde Park, MT

Phil Rostad
Secretary-Treasurer
Rancher
White Sulphur Springs,
MT/Bozeman, MT

George Olsen
Immediate
Past-President
Retired CPA
Helena, MT

Rick Berg
Rancher
Martinsdale, MT

Kirsten Feldman
Businesswoman
Nye, MT/New York, NY

David Leuschen
Founder/Senior
Managing Director,
Riverstone Holdings, LLC
Roscoe, MT/
New York, NY

Chris Montague
Business Owner
Billings, MT

Julie Pribyl
Rancher
Great Falls, MT

Katie Pribyl
Rancher
Great Falls, MT

Errol Rice
Consultant
Bozeman, MT

Jerry Sorensen
Retired Land Asset
Management
Bigfork, MT

Dan Vermillion
Business Owner
Livingston, MT

MLR FOUNDATION BOARD OF DIRECTORS

Nick Bucklin
President
Mill Valley, CA

Skip Olinger
Vice President
Bozeman, MT

Chris Montague
Secretary-Treasurer
Billings, MT

Kirsten Feldman
Nye, MT/New York, NY

John Heyneman
Sheridan, MT

Errol Rice
Bozeman, MT

Kirk Wortman
Jackson Hole, WY

STAFF

Jan Marie Banks
Great Plains Manager

Matt Bell
GIS Manager

Melanie Brock
Philanthropy Director

Shelly Boettger
Development
Coordinator

Paul Burdett
General Counsel

Colin Cooney
Stewardship Director

Amber Feddes
Regional Stewardship
Manager

Brad Hansen
Transactions Director

Chad Klinkenberg
Conservation Director

Amy Kruse
Operations Manager

Scott Laird
Regional Stewardship
Manager

Lucinda Morris
Communications &
Project Manager

Zach Owen
Regional Stewardship
Manager

Lindsay Petrillo
Regional Stewardship
Manager

Mark Schiltz
Western Manager

Tony Smith
Regional Stewardship
Manager

Becky Stearns
Bookkeeper

Katie Stokes
Managing Director

Mark Szczypinski
Regional Stewardship
Manager

Garrett Titus
Landowner Advocacy
Manager

Jordan Vana
Managing Director

LAND STEWARDS

Louise Bruce
Brian Neilsen
Dan Reinhart
Jim Roscoe

COUNCIL OF TRUSTEES

John Carron, PhD
Hydros Consulting
Boulder, CO

Bob Hall
Businessman
Livingston, MT/
New York, NY

Joanie Hall
Businesswoman
Livingston, MT/
New York, NY

Sidney (Skip) Herman
Managing Partner
Bartlit Beck Herman
Palenchar & Scott, LLP
Big Timber, MT/
Chicago, IL

Judy Hutchins
Landowner
Heron, MT

Hamilton E. "Tony" James
Chairman,
Jefferson River Capital
Twin Bridges, MT/
New York, NY

David S. Joys
Retired
Nye, MT/New York, NY

Kathryn Kelly
Retired
Bozeman, MT

Jim Messina
President & CEO
The Messina Group
Clyde Park, MT/
Washington, D.C.

Kim Montag
Accountant
McAllister, MT

David R. Paoli
Partner,
Paoli & Leisher, P.C.
Missoula, MT

Monica Conrad Paoli
Businesswoman
Missoula, MT

William Taylor, III
Partner,
Zuckerman/
Spaeder, LLP
Emigrant, MT/
Washington, DC

Kendrick R. Wilson, III
Retired Businessman
Hobe Sound, FL

FUTURE MONTANA COMMITTEE

Kori Anderson
Corvallis, MT

Freddy Avis
Bozeman, MT

Nick Bucklin
Mill Valley, CA

Augusta "Gusty" Clarke
New York, NY

Parker Corbin
Houston, TX

Steven Davis
Bozeman, MT

Emily Lammers
Salt Lake City, UT

Brian McCurdy
Bozeman, MT

Dan Mahoney
Missoula, MT

Errol Rice
Bozeman, MT



2025 Annual Report: Stories by MLR staff.
Design by Real World Design. Printed by Advanced Litho Printing.

HOW YOU CAN HELP



Common Loon

Donald M. Jones

There are many ways that families, individuals, foundations, corporations, and organizations can provide financial support for MLR's conservation work.

Staff can assist you in determining the most suitable option for your financial needs.

Call us at 406-443-7027 or visit mtlandreliance.org

Because MLR is a non-profit corporation, contributions made to MLR are tax-deductible. Planned gifts are one way to make a meaningful impact on MLR's mission, but there are many ways that families, individuals, foundations, corporations, and organizations can provide financial support for MLR's conservation work.

Stock gifts are welcome and MLR has a very streamlined process in place through its investment team to assist donors to ensure a smooth, well-documented transaction.

Your gift goes directly to MLR's work with private landowners to protect Montana's open spaces and working landscapes.

How to Give

- Cash contributions
- Securities, land, vehicles, and other property

Gift & Estate Planning

- Bequests
- Gift annuities
- Charitable trusts
- Life estate gifts
- Life insurance policies
- Beneficiary designations
- Retirement assets

MLR's tax identification number is 81-0369262.



HELENA OFFICE

401 N. California St., Helena, MT 59601 • 406-443-7027 • info@mtlandreliance.org

SOUTHWEST OFFICE

PO Box 48, Sheridan, MT 59749 • 406-570-4271 • mlrsw@mtlandreliance.org

WESTERN OFFICE

PO Box 460, Bigfork, MT 59911 • 406-837-2178 • mlrnw@mtlandreliance.org

GREAT PLAINS OFFICE

PO Box 452, Forsyth, MT 59327 • 406-580-8774 • mlrgp@mtlandreliance.org



Cover: ***Madison Valley and Sphinx Mountain***

Kevin League photo