



2020
ANNUAL REPORT

OUR MISSION

The Montana Land Reliance (MLR) partners with private landowners to permanently protect agricultural lands, fish and wildlife habitat, and open space.

The immediate accomplishments of MLR's conservation work are measured in acres of land protected and miles of streambank preserved.

The lasting benefits of MLR's work are the perpetuation of a lifestyle and an economy that rely on responsibly managed private land and the increasingly valuable Montana open spaces that will continue to nourish the spirit of future generations.



THE IMPORTANT WORK CONTINUES

It is inarguable that 2020 was a year like no other. Families, communities, and businesses around Montana were upended by the COVID-19 pandemic. All of our lives were impacted. And yet, the important work of The Montana Land Reliance (MLR) continued. I am extremely proud of the way that the board and staff of MLR handled the uncertainties we faced daily, both organizationally and personally, while continuing to protect the agricultural and open lands of Montana.

In 2020, MLR closed on 25 conservation easements, adding 33,811 new acres, which is on pace to realize MLR's long-term vision of helping landowners protect an additional one million acres by 2040. These additional acres pushed MLR to 1,170,937 total acres conserved across Montana. We also saw an increase in dollars available to protect sage grouse habitat and native grasslands in central and eastern Montana. This funding helps farmers and ranchers stay on the land and protect working lands in these critical habitats.

MLR was able to complete consequential projects in the places that Montanans cherish, under unprecedented circumstances, while respecting the health and safety of our staff and our easement donors. This speaks to the competency and drive of our staff and I would have expected nothing less. Although the year was challenging, it illuminated the resilience and strength of our organization and the enduring value of our mission to permanently protect agricultural lands, fish and wildlife habitat, and open space.

The pandemic has led to a renewed awareness among the public of how important open space and conserved lands are for mental and physical health and a recognition that we need to continue to secure more of these lands for future generations.

The land MLR works to protect has a tremendous capacity to heal, foster wellness, and bring people together. Open lands and outdoor spaces are necessary for the health and well-being of all Montana communities. In 2020, Montanans and visitors from across the nation got outside in record numbers and enjoyed the amazing natural wonders of our state, through hiking, hunting, fishing, and watching the sunset over wide-open spaces.

In this annual report, we celebrate the people and the places that demonstrate the strength and resilience of our organization. You will read a profile of the Sieben Live Stock Company, one of the largest conservation easements ever completed in Montana. If there was ever a success story about conservation easements in our great state, it is the story of the Sieben Live Stock Company.

Theo and Lisa Wright, of Lewistown, are the recipients of the 2020 William F. Long Conservation Award, MLR's award given to landowners who have protected critical bird habitat. Theo and Lisa, avid bird hunters, have spent their time and resources to improve their property near Grass Range for upland birds, livestock grazing, and crop production, leaving the place much better than they found it.



You will also read about Jeff Shryer, of Bozeman, MLR's Conservation Award recipient. Jeff's life

and work is dedicated to the conservation of land and resources both in Montana and around the world. I think you will find his story to be remarkable and admirable, reflecting values worth striving to emulate in our own lives.

Due to the pandemic, the MLR staff and board were not able to meet in person for most of 2020 and we missed seeing each other's faces on a regular basis. I look forward to the day that we can meet again in person. In 2021, we will continue to face economic, social, and public health challenges in our communities and around the nation, as more people move to Montana to find peace in open landscapes. This will make the work MLR does even more essential – a fact that I hope will provide our donors, landowners, partners, and supporters some solace and inspiration.

As we move into 2021, MLR will continue to be an outstanding example of how progress on critical issues like land conservation can be made even during the hardest of times.

I would like to extend my sincerest thanks to you, our supporters, donors, and advisors, who are building a lasting legacy in Montana for current and future generations.

– George Olsen, MLR Board President

2020

The events of 2020 touched the lives of every American in a myriad of unexpected ways. Families, communities, governing bodies, businesses, and non-profit organizations were confronted with an uncertain future.

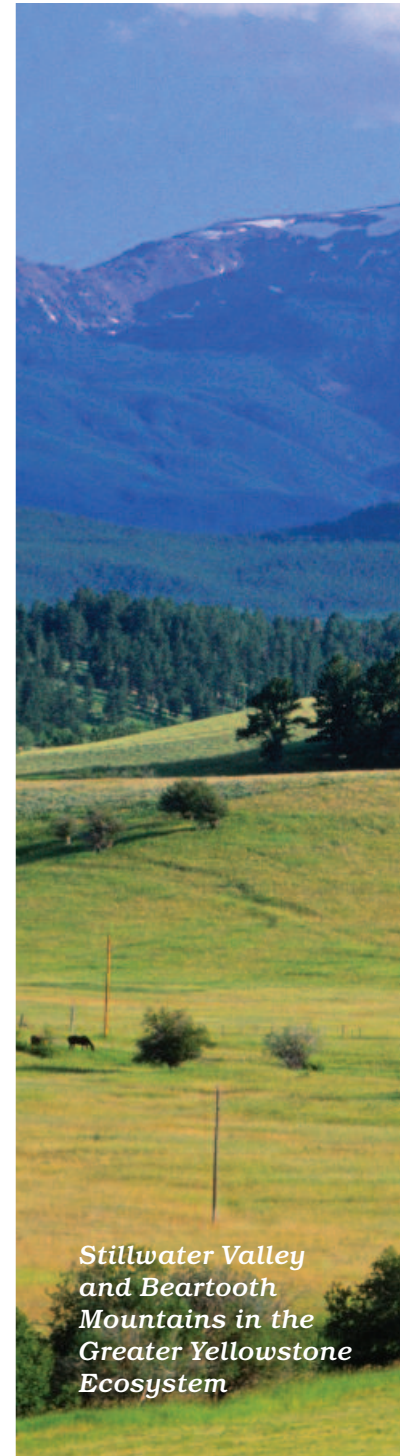
The year tested all of us, individually and as a community, and challenged us at The Montana Land Reliance (MLR) to adapt and move forward while continuing to fulfill our mission – a mission that became even more important with the changes Montana has experienced over the last year and will most likely continue to experience into 2021.

MLR's success continues to be realized through work that has been taking place since 1978. Building relationships one family at a time, to protect agricultural lands, fish and wildlife habitat, and open space.

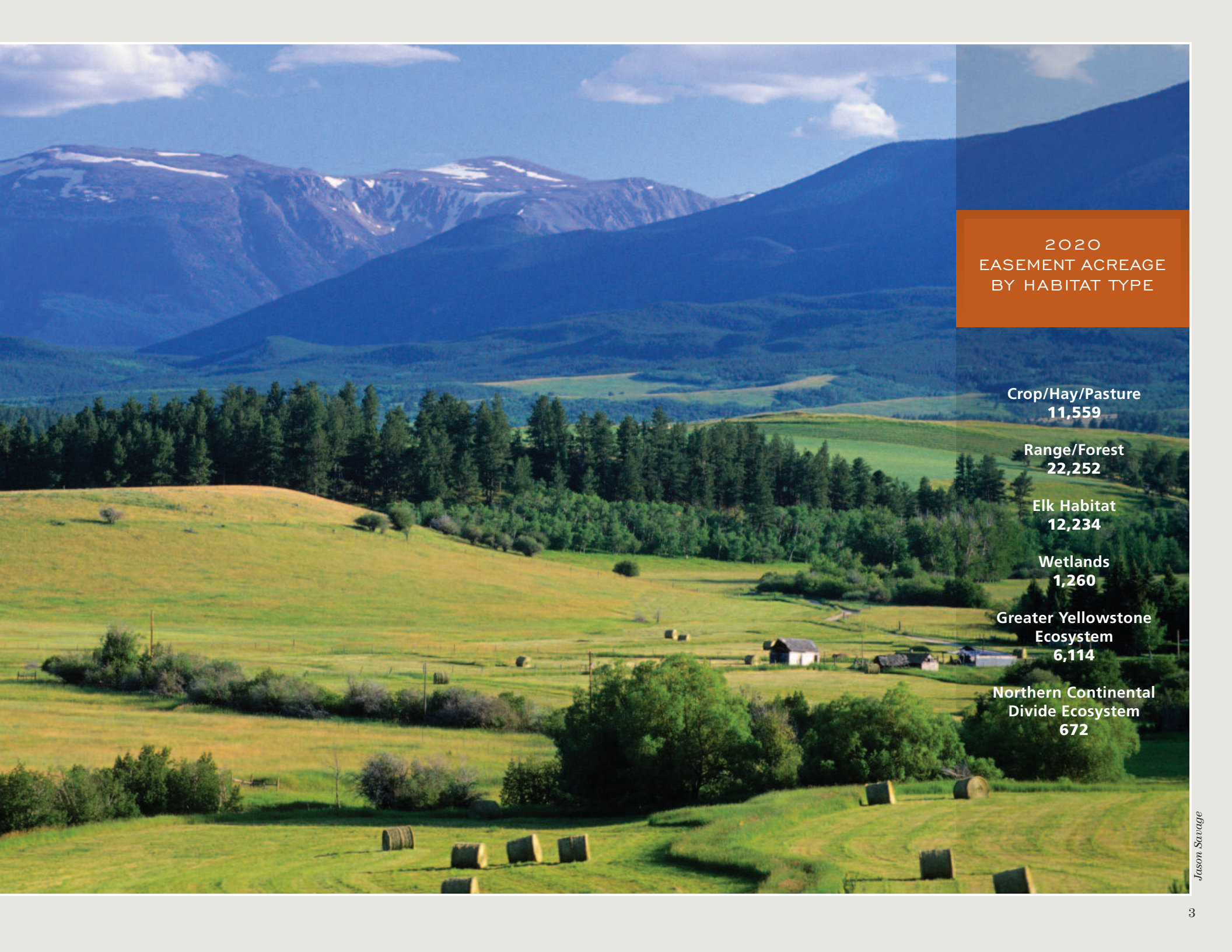
Every acre of working land, mile of streambank, and view of open space was protected through the partnership of like-minded individuals.

This work is accomplished through early morning conversations in pickup trucks and discussions around kitchen tables; by time spent together on one of Montana's blue-ribbon trout streams; and with a collective understanding that the stewardship that is done today will protect these special places for future generations.

For MLR, 2020 has shown the strength of the communities we serve, while also illuminating challenges for land conservation in Montana. More than 34,000 acres of rangeland every year are converted to some type of development, with a total of 1.3 million acres in Montana converted in the last 20 years. In the next 10 years, it is expected that the population of Montana will grow 14%, with the main growth happening in sensitive ecoregions like the Greater Yellowstone Ecosystem (GYE) and the Flathead Valley. In addition, Montana saw an unexpected spike in population growth during the pandemic, with new residents seeking places with fewer people and more opportunities for outdoor recreation.



*Stillwater Valley
and Beartooth
Mountains in the
Greater Yellowstone
Ecosystem*



**2020
EASEMENT ACREAGE
BY HABITAT TYPE**

**Crop/Hay/Pasture
11,559**

**Range/Forest
22,252**

**Elk Habitat
12,234**

**Wetlands
1,260**

**Greater Yellowstone
Ecosystem
6,114**

**Northern Continental
Divide Ecosystem
672**

Since 1978, The Montana Land Reliance has worked with private landowners all across Montana to meet their conservation goals, including the protection of major watersheds critical to agriculture and wildlife habitat.

1,170,937 acres of ecologically, agriculturally, and historically important land, and 1,880 miles of streambank, are now protected under MLR's 922 conservation easements.

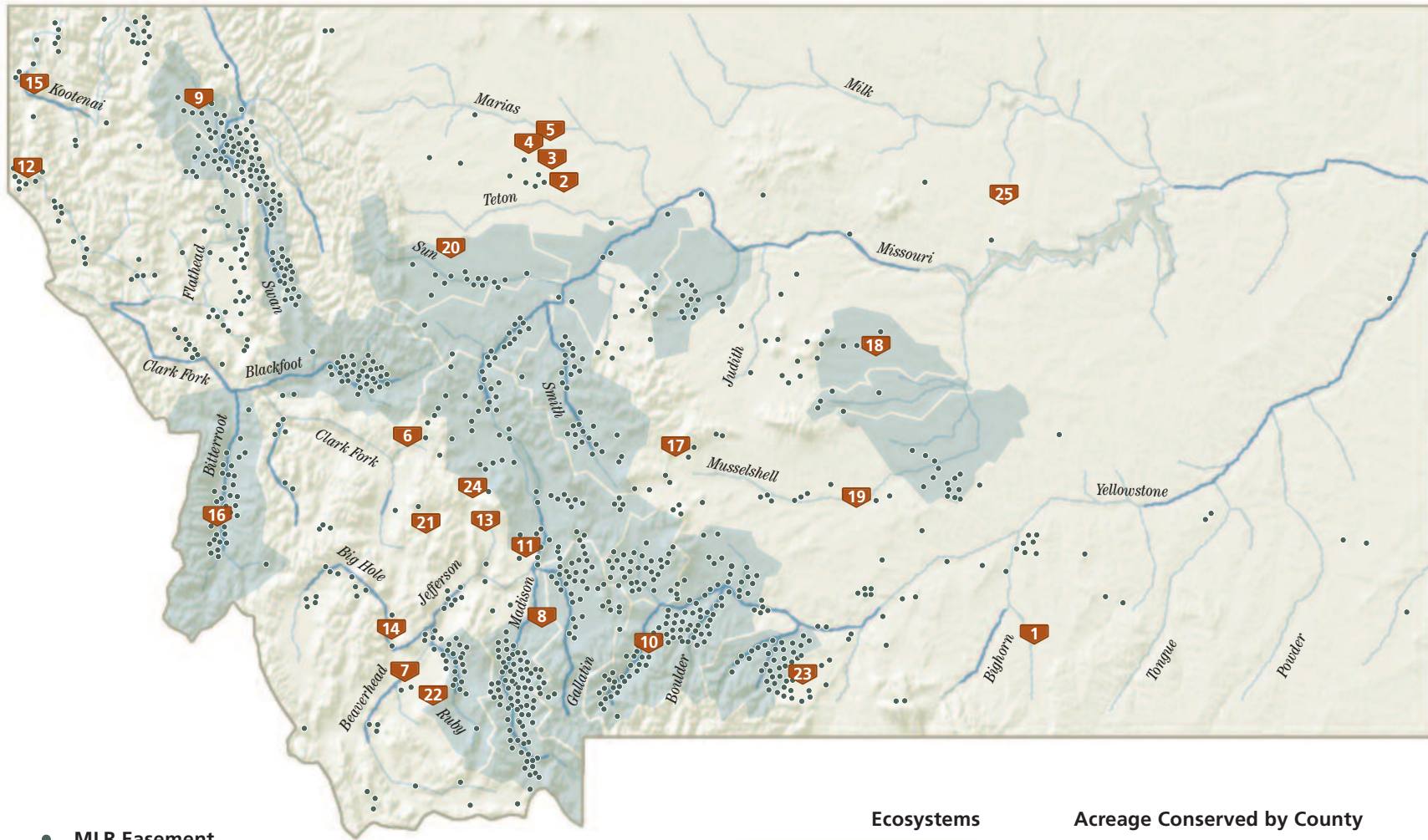
Near Ennis

2020 EASEMENTS

1	Custer Battlefield Preservation Committee, Inc.	2,329
2	Bliss, Aaron D. & Dava D. Bliss	1,539
3	Bliss, Brandon David	320
4	Bliss, Whitney J.	320
5	Bliss Farms Partnership	3,768
6	Brander, Linda	60
7	Madison Valley Garden Ranch, LLC	925
8	Cold Springs Ranch Montana, LLC	426
9	Thornberg Lake, LLC	672
10	Double AA Corporation	1,326
11	Dreaming Fields, LLC	1,265
12	Hardy, Christopher B. & Judith Hutchins	57
13	Joronen, Michael & Leslie Joronen	158
14	Kalsta Ranch, Co.	1,031
15	KGK, LLC	72
16	Estate of Richard S. Kice	46
17	Little Belt Land, LLC	3,251
18	Lewis, Marcus L. & Terry L.	3,450
19	Musselshell Retreat, LLC	533
20	Schatz, Greg P. & Deborah A.	240
21	Paul T. Smith Ranches, Inc. Paul B. Smith Tresa V. Smith	3,655
22	SRI River Holdings, LLC	4,362
23	Stout, Richard O. & Janet P.	805
24	Tompkins, E. Allen	510
25	Watson, Lorraine E.	2,691

TOTAL ACRES: 33,811

2020

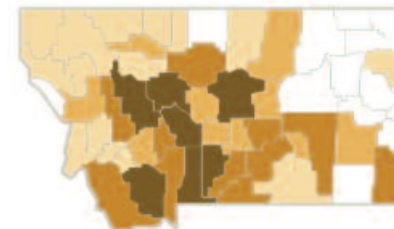


- MLR Easement
- Major Watershed
- Blue- and Red-ribbon Trout Streams

Ecosystems

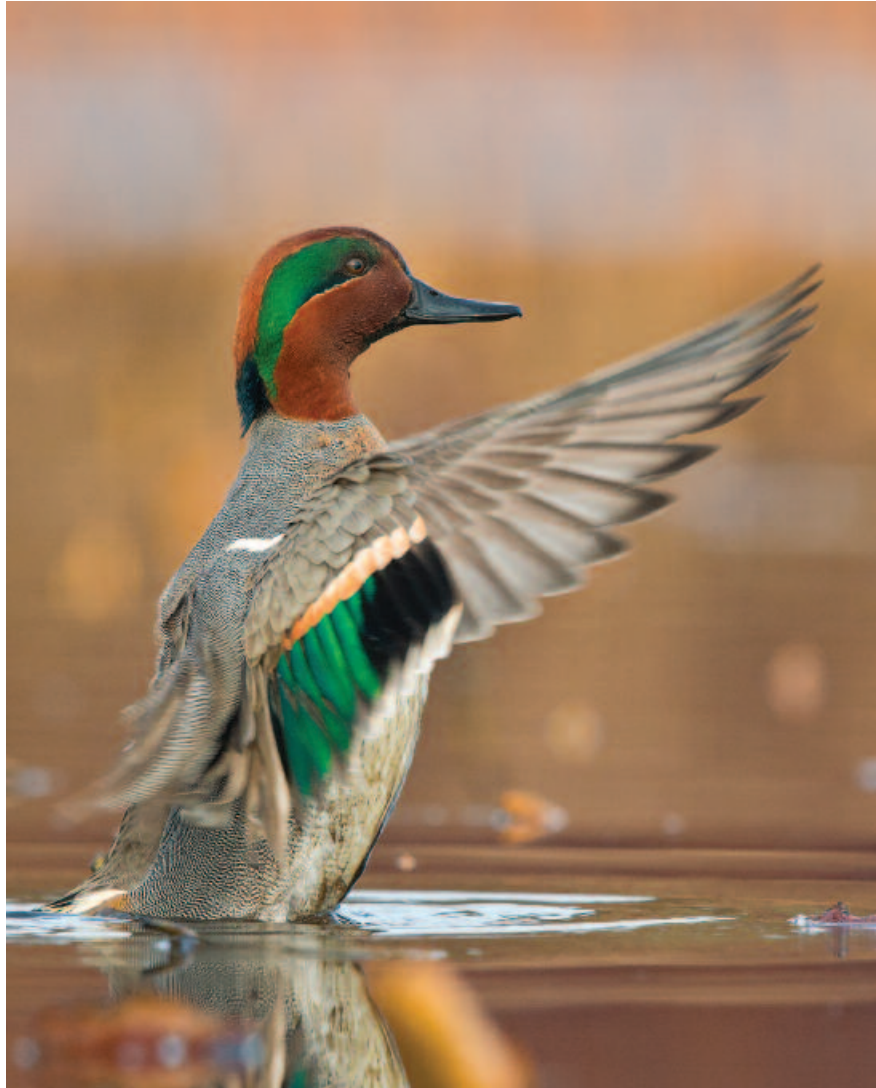


Acreage Conserved by County



- 1–10,000
- 10,001–25,000
- 25,001–50,000
- More than 50,000

2020



donaldmjones.com

Looking ahead, MLR remains committed to its long-term goal of helping landowners protect another million acres by 2040. MLR believes that the trends we are seeing in Montana are an opportunity to help even more landowners conserve working lands and wide-open spaces for years to come.

The things MLR focuses on will not change. MLR will ensure it has the capacity to do the work. MLR will earn the trust of new landowners and keep the trust of existing landowners. MLR will continue to focus on the lands that matter most in the landscapes under the greatest threat of development. MLR will continue to develop strong partnerships and will continue to steward conserved lands to ensure they benefit all of us in perpetuity. MLR will continue to be a leader in the land trust community and will remain one of the top-performing land trusts in the country.

As MLR looks to the future, we also reflect back on the largest conservation easement ever donated to MLR by the Sieben Live Stock Company. It is important to celebrate and learn from those in our MLR family who have found success for both their business and the land through conservation easements, innovative partnerships, land management practices, and enthusiasm and heart for what they do.

Green-winged Teal



Smith River



WATERSHED
PROTECTION

Total Miles
of Streambank
Protected



PRIVATE LAND
PROTECTION

Total Conservation
Easement Acreage

1,170,937



*For five generations, the Hibbard family
has raised sheep and cattle in the
shadows of the Little Belt Mountains.*

SIEBEN LIVE STOCK COMPANY

THE FAMILY

The Hibbard family is well known in both agricultural and non-agricultural circles in Montana for a good reason. Generations of the family have prioritized working in partnership with organizations, government agencies, and most importantly, each other, in order to fulfill their mission of having a successful operation while protecting and improving their land.

In non-Covid years, MLR visits with easement donors, in person and on their land, often meeting with the entire family, and spends hours talking to people about their places and their work. There is no substitute for putting boots on the ground to get a sense of a place and the people that love it. There is nothing quite like hearing the joy in people's voices as they talk about their land and share what makes their place special to them. Hearing the stories that a piece of equipment or a certain part of their ranch sparks in their minds.

However, when Cooper Hibbard, the fifth generation of his family to manage the Sieben Live Stock Company alongside his uncle, Chase Hibbard, was interviewed about their family ranch, he was extremely good at painting the picture over the phone.

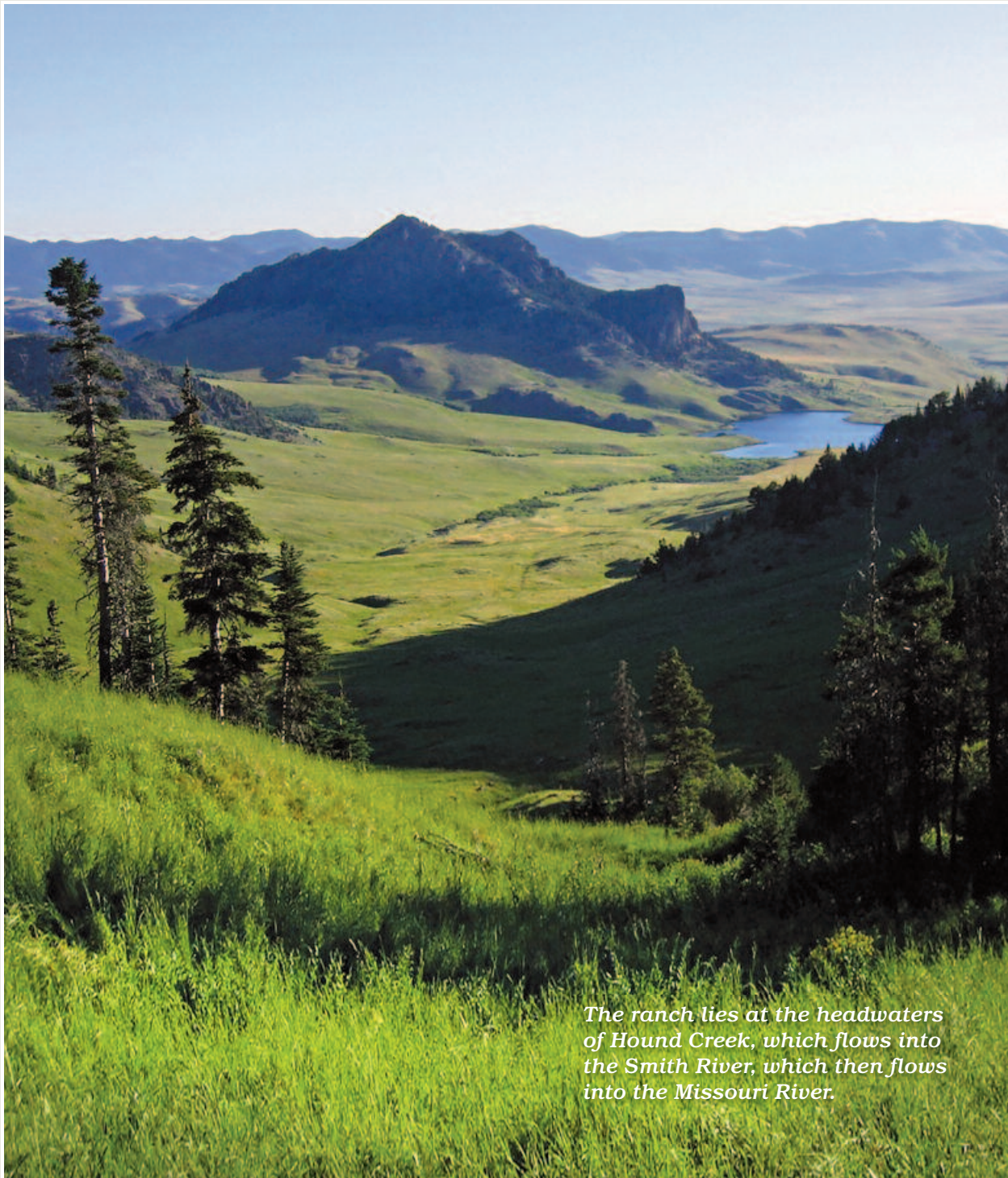
One of the things young ranchers are often asked is when they knew they wanted to continue in the family business. Most know that they want to ranch when they are pretty young, and so did Cooper.

"I distinctly remember being at my mom and dad's house in Helena and I really wanted to go to the ranch for the weekend, but they told me we weren't going to be able to go. I remember sitting on the stairs and I was upset. All I remember thinking is, 'but I need that place,'" Cooper explained. "I realized that was the most important thing in my life."

"Because I knew what I wanted to do, I approached my development with that thought. What did I need to do to make our ranch an exciting, viable, successful operation that people want to be a part of, our own family included. From an early age, that's what I knew; I had to use those metrics to measure success," Cooper said.



Marshall Hibbard



The ranch lies at the headwaters of Hound Creek, which flows into the Smith River, which then flows into the Missouri River.

Whit Hibbard

PROFILE

SIEBEN LIVE STOCK COMPANY

THE RANCH

In 1868, Henry Sieben founded the Sieben Live Stock Company. Henry Sieben was 17 years old when he sought out his destiny in Montana alongside his brother. He hunted, trapped, and freighted supplies from Fort Benton, Montana and Corinne, Utah, to Montana mining camps. Later, he saw a future in raising sheep and cattle and bought land and water rights in various parts of Montana until he finally ended up with two ranches at the turn of the century – one in the Adel Basin and another outside of Helena.



Jason Savage

For five generations, the company has been owned by the Hibbard family, (who are descendants of Henry Sieben’s daughter), and they raise sheep and cattle in the shadows of the Little Belt Mountains. The ranch lies at the headwaters of Hound Creek, which flows into the Smith River, which then flows into the Missouri River.

“When I think about this place, it’s hard not to get emotional,” Cooper stated. “I’d say it’s undeniable to those of us that are a part of this place that it has its own heart and its own soul. It is its own living creature.”

The ranch is on a unique habitat that serves as an important wildlife corridor and is a magnet for a variety of native species. The ranch adjoins the Beartooth Game Range and Whitetail Prairie, which holds thousands of elk in the winter and provides excellent hunting opportunities.



Alexis Bomogofsky

It features grassland covered with wildflowers, aspens, and mixed pine forests that teem with wildlife, and offers sweeping mountain views. The ranch leases the game range for grazing from Montana Fish, Wildlife and Parks (FWP). It's a "super lease," the biggest of its kind in the state.

"It's a private-public partnership, where we graze certain zones, do a rest rotation and high-density, short-duration grazing. The agreement is watershed-wide. The habitat, wildlife, and entire ecosystem have benefited from the arrangement, and now the range is wintering over 2,500 head of elk," Cooper explained. "We now have thriving ecosystems, with unparalleled hunting opportunities, because of the cooperation and good management," Cooper noted.

The ranch and surrounding public lands are home to sandhill cranes, curlews, northern harriers, bald and golden eagles, blue grouse, Hungarian partridges, waterfowl, pronghorn, deer, elk, mountain lions, and black bear. Moose and

even an occasional wolf pass through on their migrations. It pulses with life for much of the year.

The ranch is productive for grass, which means it is also productive for both wildlife and sheep and cattle.



Jason Savage

"Except for maybe the winter," Cooper laughed.

Bill Long, former MLR managing director, saw the grasslands of the Sieben Live Stock Company ranch as a "short-grass Serengeti." Bill was correct in that assessment. There are more native grasses per acre in this area than in any other region of the state.

"Our ranch is extremely productive for grass, which means it is also productive for both wildlife and sheep and cattle," Cooper said. "They go hand and hand here."

The operation, and the Hibbard family who manage it, face many of the same challenges they did in the 1800s. The ranch is at a high elevation, it has short growing seasons, water challenges, and long cold winters.

But, by being innovative and testing new methods, they are making it work even better than before. The Hibbards have tested and implemented a variety of practices including adaptive planned grazing and no-till hay farming to improve the health of their soil, increase forage quantity and quality, and reduce animal feed and healthcare costs.

"It's a very special place. It's also very harsh and very honest. Running a successful ranching operation in this environment at this altitude with this sort of a growing season, there are a lot of limitations that we are faced with. But at the same time, that's where so much opportunity lies. If we can do it here, we can do it anywhere. We are starting to pull that off."

"It is an exciting, successful operation," Cooper explained. "The land is willing for that to happen. It is honest with us about what works and what doesn't."

To protect that honest and unique landscape, in 2008, 140 years after Henry Sieben founded the ranch, the family members of the Sieben Live Stock Company donated a 40,064-acre conservation easement to MLR. It is the biggest conservation easement ever donated to the land trust in its over 40-year history.

The land ethic, as anyone can tell by their actions over the generations, is guided by the Hibbard family's constitution, which states:

We are stewards first, owners second. Stewardship implies a nurturing of the asset for a purpose greater than the individuals who have control of the asset. Owners have a responsibility to add value to the land for the sake of the land. In this sense, the ranch lays as much claim to us as we do to it.

SIEBEN LIVE STOCK COMPANY

THE EASEMENT

The decision to put the ranch in a conservation easement was neither quick nor easy, every Hibbard would probably agree. The family debated the idea of an easement on the property for nearly a decade before agreeing in 2008 to the 40,064-acre conservation easement held by MLR.

At first, Cooper recalled, the family started looking into the easement as strictly an estate tax tool. Although both Chase and Scott Hibbard served on the MLR Board of Directors before the easement donation, the decision took years of conversations, estate planning, and long-range planning discussions with the whole family.

Cooper, who was in his early 20s at the time the family started considering the donation, remembers it being a fascinating process, one that pushed all of them to think about who they were and what was important to them.

“It brought us together as a family. It made us articulate what our values are, what was important to us,” Cooper recalled. “We had to get vulnerable with each other, voicing our desires and fears. We developed a new level of trust in each other.”

“In many ways, the process of deciding on whether or not to put a conservation easement on the property was something that came naturally to

the family,” Cooper explained. “The family tries to find ways to make things a win-win for everyone.”

“Well, it’s what you learn at Ranching for Profit. Your team has more right answers than the individual itself and when you work with your team, every individual is better off,” Cooper advised. “And we all came to the conclusion that an easement was right for us and most importantly, right for the ranch.”

It was their commitment to both the future and the past that convinced them to donate the conservation easement, which makes up the heart of the ranch.

“It wasn’t just an estate tax tool, although that was a great benefit to us as a family. At the end of the day, we valued the land as it is. The easement gave us comfort and peace of mind that this landscape would continue in perpetuity. That is probably the biggest value the easement brought to us,” Cooper stated.

The Hibbards see conservation easements as a powerful tool, one that every farmer and rancher should at least look into when considering the future of their own properties. But the easement wasn’t just to benefit the family, it was a way to help keep the landscape as a working ranch and help shape what Montana looks like in the future.

“Keeping working lands working for rural communities is so important. We want these lands to stay productive. Each easement can be tailored to an individual’s unique circumstances. They can be pretty darn flexible and accommodating. It allowed us to keep this land in the family and continue ranching,” explained Cooper.

The decision that the Hibbards made, to put their ranch into a conservation easement with MLR, combined with the same decision hundreds of landowners across the state have made over the decades, benefits us all. These families and individuals protect Montana’s heritage, working lands, and open space for future generations, and cumulatively have helped to make MLR one of the most effective land conservation organizations in the country.

The work that MLR does is rooted in the families and communities of Montana. Although the reasons people put their land in a conservation easement may differ, what binds them all together is a deep and abiding appreciation for the land.

“It’s become almost sacred. This ranch is more important as a whole than our needs as individuals. A primary concern is to keep it that way,” Cooper stated as the interview came to an end. “Now, time to get back to ranching.”



AGRICULTURAL HERITAGE

Total Forest/Range
Acres Protected

972,334



Total Crop/Hay/
Pasture Acres
Protected

198,603



The conservation easement was a way to help keep the landscape as a working ranch.

2020 CONSERVATION AWARD

JEFF SHRYER

Jeff Shryer's love of land and wildlife conservation all began in the snow-covered plains of central Nebraska where he grew up, then the citrus orchards and dairy farms of southern California where he spent time as a teenager, and then into a professional career as a wildlife biologist and warden that took him around the world working to protect wildlife species and the habitats they need to thrive.

Jeff began his career working in the desert ecosystems of Nevada and California conducting research on condors and the desert tortoise. From the desert, he then went to Alaska to work with bear, Dall sheep, and wolves. Then an opportunity to lead the first Bureau of Land Management (BLM) Endangered Species Program in Montana brought him to Miles City, where he directed research on endangered bats, raptors, and black-footed ferrets.

After a stint with the BLM, Jeff traveled to Botswana as part of the U.S. Peace Corps. He served as the director and head game warden of Chobe National Park, known for its large herds of elephants and Cape buffalo. Jeff worked with locals to protect threatened species from poachers and advised park employees on wildlife management best practices. After Botswana, Jeff completed wildlife assignments all around the world, including Madagascar, Washington D.C., New Jersey, West Virginia, Bolivia, Antarctica, Iceland, Greenland, Israel, Sri Lanka, Australia, Galapagos Islands, China,

and Siberia. He conducted wildlife inventories, managed wildlife refuges for the U.S. Fish and Wildlife Service, and helped prepare management plans for wildlife reserves around the world.

Looking back on his career, Jeff attributes his incredible adventures and opportunities to enthusiasm and saying yes. He noted that, "Einstein said 'we are taught to believe that our happiness is dependent on possessions and comfort, when all we really need to make us happy is enthusiasm.'"

Jeff's life has been dedicated to stewarding resources and wildlife species with dedication and unparalleled energy that will have a lasting impact on people, wildlife, and ecosystems around the world. His enthusiasm for conservation and our natural world permeates every word he says. You can't help but get excited when you hear him talk about his work.

But where did this love of wildlife and land conservation come from?

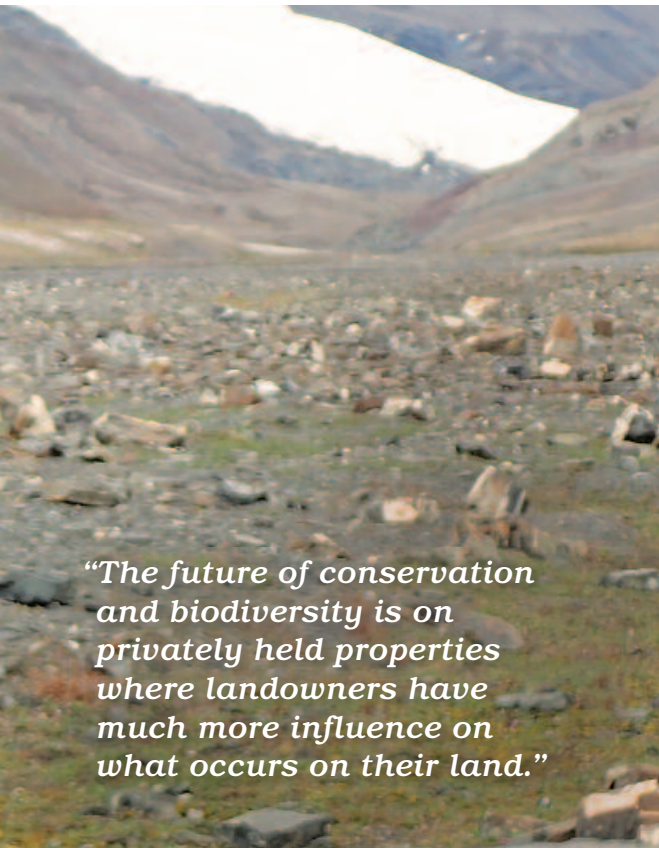
It all started when he got a bike for Christmas. Jeff recalled, "I remember my father saying, 'I see Santa brought you a bike, now you can get a paper route.'"

The gift of the bicycle gave him two additional gifts that would change his life forever: the gift of freedom and the gift of the outdoors. With a bike, he could go to the foothills and watch wildlife,



look for snakes, spot birds, and explore the natural world. Back then, the foothills surrounding his town were wild chaparral woodland. There were not yet housing developments eating up the land around the town.

"I got hooked on being in wild places," Jeff explained. "Any chance I got, I escaped and went to hike and spend time outdoors. My parents were concerned that I wasn't normal in junior high and high school because I was not one to participate in the things normal teenagers did. I wanted to be outside."



“The future of conservation and biodiversity is on privately held properties where landowners have much more influence on what occurs on their land.”

Every chance I got, I went to the foothills.”

His mom was so worried, in fact, she took him to a psychiatrist who told her that he’d grow out of it.

“Fortunately,” Jeff said with a laugh, “he was wrong.”

Not long after receiving the bike, Jeff came across an ad in an outdoor magazine. He remembered, “It said something like, ‘live a life only others can dream about, be a game warden or wildlife biologist.’ That was the point where I realized maybe I could have a career being outside with wildlife.”

And the rest, as they say, is history.

When Jeff moved to Miles City in 1977 to be the project leader for the BLM’s first endangered species management program in Montana, he started looking around for property to purchase for both vacationing and retirement. A co-worker told him about Corwin Springs, north of Yellowstone National Park. They drove out together from Miles City one day and he thought, “This is it!”

After writing to landowners in the area to inquire about purchasing some acreage, one rancher wrote him back and said he would be willing to sell him a chunk of land. The 70 acres Jeff purchased in the late 70s included an important large mammal wildlife corridor and provided Jeff with an anchor point during his career that took him around the world. In 2018, Jeff partnered with MLR to place a conservation easement on this property located in the Greater Yellowstone Ecosystem (GYE). In 2020, Jeff furthered his conservation legacy by making a planned gift to MLR.

“Jeff’s great focus is the protection of lands possessing high biodiversity, and he is one of the strongest believers in private land conservation that I have ever known. He puts his beliefs into action,” Kathryn Kelly, MLR’s Greater Yellowstone manager stated. “He’s always coming up with new ideas and ways to expand knowledge of conservation easements and encourage collaborative efforts between organizations and agencies.”

Jeff is now retired, but his enthusiasm has not slowed. He continues to be an ardent supporter of wildlife and land conservation in Montana. Jeff is currently working closely with professors and researchers at Montana State University to use state of the art mapping, spatial analysis, and aerial tools to identify properties in southwest Montana that have high levels of biodiversity. This identification allows MLR to prioritize protecting lands that are of high value and are in danger of being subdivided and developed. Not only does Jeff help identify these high-value lands, but he also helps to fund conservation easements on those properties as well.

When Jeff was asked why he decided to focus his efforts on private land conservation, he shared, “the future of conservation and biodiversity is on privately held properties where landowners have much more influence on what occurs on their land than public servants have on public lands. I am extraordinarily grateful to have had the experiences I’ve had and to be able to put my mind to work on protecting the resources on our private lands. My efforts are intended to set a positive example and inspire others to consider doing the same.”



2020 WILLIAM F. LONG CONSERVATION AWARD

THEO AND LISA WRIGHT

Theo and Lisa Wright's land ethic is simple but powerful: leave the land better than you found it. Their dedicated work to improve upland bird habitat on their property in central Montana is why The Montana Land Reliance (MLR) selected them for the 2020 William F. Long Conservation Award. The award is given to landowners who have gone

above and beyond to improve and protect significant upland bird habitat in Montana.

The Wrights love central Montana for many reasons, two of which include the number of days the sun shines and the opportunity to hunt upland birds behind good dogs. They are avid bird hunters and

love to get out and watch their lab and two French Brittans work. Birds, bird hunting, and enjoying all that Montana's great outdoors have to offer are central to their interest in land conservation and improvement.

For the past several decades, the Wrights have purchased underperforming parcels in Montana and have worked to improve the land's agricultural production and wildlife habitat values. Theo explained, "Lisa and I have tried to buy properties that have been taken out of production and deteriorated over time and restore them to a higher level of production. We look for an underutilized resource. Literally, I guess, we want to make the world a better place."

In 2002, the Wrights purchased a farm near Black Butte, east of Lewistown, Montana, that had been conserved by MLR. Theo recalled, "Lisa visited the place. She saw it as a great opportunity, an opportunity to rehab the land. Based on that one visit, we bought it."

Theo remembered, "At the time, the land was in tough shape. The grasslands were not as productive as they could have been, weeds were a serious problem, and there wasn't adequate water distribution for livestock."

The Wright's active wildlife management plan benefits upland birds like Hungarian partridge.



Lisa Wright



Over the years, the Wrights have made improvements to the farm, always leaving the land better than they found it. As part of their active wildlife management plan, they leave food plots and extensive winter cover in place to benefit upland birds; particularly sharptail grouse, Hungarian partridge, and pheasant. As part of their agricultural improvements, they put more acres into grain production annually and have moved away from crop fallow to a continuous cropping sequence. They also fence cattle out of the riparian areas and have enhanced water distribution through the development of reservoirs and a pipeline system.

The difference between when the Wrights bought the property to what it looks like now, is dramatically different. Theo noted, "It's definitely a lot greener. It is way more productive, ecologically and agriculturally. Native grasses have been coming back. It's also more profitable and healthier."

Today, in addition to being a productive agricultural operation, the Wright's farm supports herds of antelope and mule deer, and coveys of partridge and grouse. In the creek bottoms are bouquets of pheasants, whitetail deer, and puddle ducks. The number of wildlife on the farm is evidence that the Wrights have found a healthy balance between production agriculture and habitat conservation. Their thoughtful stewardship proves that farming and wildlife can thrive side by side.



Two of many reasons the Wrights love their farm in central Montana: sunshine and hunting upland birds behind good dogs.

FOREVER MONTANA SOCIETY

The Forever Montana Society exists to honor those who have left a lasting legacy of conservation, and to inspire others to do the same.

With perpetuity in mind, the Forever Montana Society is open to all consenting MLR easement donors and to those who have provided for MLR's mission in their overall financial and estate plans, sustaining agricultural lands, fish and wildlife habitat, and open space for generations to come. This list recognizes those who have agreed to be listed as Forever Montana Society members.

ABN Ranch	Goeddel, David & Alena	Montag, Kim & Jeff
Bartz, Tim & Trish	Guyette, Jim & Kay	Navratil, Gerald J.
Berghold, Joanne & Billy	Hall, Barry & Eleanor	& Maryellen
Bibler, Carol	Hegness, Paul	Perry, Joe L. & Debby L.
Blanchet, Richard	Henderson, Jay & Janette	Pfeiffer, Steven B.
Boyle, Rich & Jan	Hohenlohe, Christian & Nora	R.V. Ranch Co.
Brander, Linda	Hutchins, Judith	Ringling, Rock
Burke, Steve & Gretchen	Kalt, Joe & Judy Gans	& Bobbi Uecker
Byrne, Sam & Tracey	Kellogg, Dennis & Kitty	Ritchey, David & Sue
Chamberlin, Wayne	Kelly, Francis J., MD	Roth, Jane R.
Conlon, Suzanne	& Deloris L.	Schatz, Deborah & Greg
Connell, Jeanne	Kelly, Kathryn	Schmidt, Chester, MD
Custer Battlefield	Kenyon, Lynn	Schutz, Jeffrey H. & Family
Preservation Committee	Kerkvliet, Joe, PhD	Smith, Carol
Dale, John & Cheryl	Kiesling, Bob	Smith, Michael
Dietrich, Christian	King, Donald & Janemarie	Spanjian, Kris
& Michelle	Kress, Karen Bates	& Ray Gilbertson
Thomas G. Eppich Trust	Laszlo, Jr., Andrew	Talcott, Terry
Frazer, Eliza & Barry Hood	& Paulette	Taylor, Jim & Valerie Anne
Freeman, Jr., Lee A.	Legg, William	Thorell, Carole
French, Dave & Priscilla	Leuschen, David	Torgrimson, Christine
Giese, Monte & Jeanna	Long, Bill & Billie Miller	Wilson, III, Kendrick R.
Gingras, Paul & Sally	Mills, William A.	& Ann Jackson

**Learn more about the Forever Montana Society
at mtlandreliance.org.**



Clark Fork River

FAMILY OF FRIENDS

The Montana Land Reliance thanks the individuals and organizations that have contributed to its success during the past year. MLR also extends thanks to those who have asked to remain anonymous.

EASEMENT DONORS

Custer Battlefield Preservation Committee, Inc.
 Bliss, Aaron D. & Dava D. Bliss
 Bliss, Brandon David
 Bliss, Whitney J.
 Bliss Farms Partnership
 Brander, Linda
 Madison Valley Garden Ranch, LLC
 Cold Springs Ranch Montana, LLC
 Thornberg Lake, LLC
 Double AA Corporation
 Dreaming Fields, LLC
 Hardy, Christopher B. & Judith Hutchins
 Joronen, Michael & Leslie Joronen
 Kalsta Ranch, Co.
 KGK, LLC
 Estate of Richard S. Kice
 Little Belt Land, LLC
 Lewis, Marcus L. & Terry L.
 Musselshell Retreat, LLC
 Schatz, Greg P. & Deborah A.
 Paul T. Smith Ranches, Inc.
 Smith, Paul B.
 Smith, Tresa V.
 SRI River Holdings, LLC
 Stout, Richard O. & Janet P.
 Tompkins, E. Allen
 Watson, Lorraine E.

INDIVIDUALS

Abbott, Jr., Francis H. & Frances M.
 Abernethy, Samuel F.
 Abrahamson, Eric S. & Donna B.
 Ahn, Angella
 Aitken, Gary
 Allen, Anna & Wills
 Alton, Todd & Sharon
 Amonette, James & Alexandra
 Anderson, Jay
 Anderson, Kori & Jason Fleege
 Anderson, Richard M. & Laurie
 Andrews, Prudence Jane
 Angiolillo, Bruce D. & Carol
 Arneson, Arnie & Sue
 Ashworth, Sarah J.
 Atkinson, Michael P. & Melissa P.
 Atwood Biggs, Ann
 Avis, Freddy
 Avis, Gregory M. & Anne R.
 Bales, Charles
 Bales, IV, Charles "Chip" C.
 Barker, Brian F. & Sally L.
 Barthelmess, James A.
 Baucus, John F. & Nina
 Baucus, Max
 Baumler, Jill
 & Dr. Robert F. Mannisto
 Baumler, Mark F., PhD
 & Ellen B., PhD
 Bean-Dochstuhl, Janet
 Beckwith, Brad
 Beevers, Kelly
 Bell, Ronald S. & Kelly M.
 Bennington, James L.
 & Josephine K.
 Bequette, David M.
 Berg, Rick & Gayle

Berg, Trevor & Mitra Lohrasbpour
 Berghold, Joanne & William D.
 Berman, David & Sandra
 Berninghausen, Tom & Nancy Cook
 Bertoloni, Janet
 Bervy, Greg & Lynn
 Besseney, Kristina
 Bibler, Carol & Jim Watson
 Bierlein, Jen & Dave Oline
 Bingel, Thad
 Binger, James M. & Patricia S.
 Bird, Ralph
 Bjergo, Allen & Jacqueline
 Boone, Jean
 Ashworth, Sarah J.
 Bowman, Carolyn L.
 Boyer, Christopher F. & Jennifer
 Boyette, Van R. & Susan H.
 Boyle, Jan & Rich
 Braig, Robert A. & Beverly J.
 Branch, George
 Breaux, Leslie J.
 Breitner, Leslie & John
 Brescia, Joseph A.
 Brim, Michael & Arlyne
 Brim, Patrick C. & Sue A.
 Broadbent, William S. & Camille W.
 Brokaw, Thomas J. & Meredith A.
 Brown, David R.
 Browne, Kristen E. & Jamie
 Bryan, Pamela R. & William L.
 Bucklin, Linda Hale
 Bucklin, Nicholas
 Bulis, Ania
 Burke, Kathleen L.
 Burke, Stephen B. & Gretchen H.
 Burnett, Gary

Burton, Jr., Joseph J.
 Bush, Tim
 Butler, Amie F.
 Byrne, Sam & Tracey
 Cahill, Edward L.
 & Kathleen Mooney-Cahill
 Callander, Charles & Melanie
 Campbell, Catherine S.
 Campbell, Sara
 Carciere, Andrew M. & Carol Taylor
 Cardello, Frank P. & Rita
 Carron, John C. & Traci L. Telander
 Carron, Reid & Rebecca L. Rom
 Carton, John L.
 Cassell, Jr., John L. "Jay"
 Chamberlin, Dr. S. Wayne
 Chania, Andrew
 Chase, John A.
 Chenoweth, Joe & Lorrie
 Cholnoky, John & Amy
 Christensen, Ben & Anja
 Christensen, Stephanie Ann
 Clarke, Augusta "Gusty"
 Clarke, Michael & Christine
 William R. & Katharine M.
 Closs Family
 Cochran, Gifford W.
 Cole, Connie & Dave
 Cole, David & Peggy Osburn
 Collins, III, William F.
 Collins, Jr., John & Anne
 Colton, Shane D. & Gina McIntyre
 Combs, Bruce C. & Deidre B.
 Conlon, Judge Suzanne B.
 Cooley, David E. & Jody
 Copeland, Christie & Bruce
 Copeland, Jeffrey
 Cote, David M. & Maureen
 Cover, McLane
 Cox, Jack & Joyce
 Cox, William "Jay" & Dody
 Cox, Tench & Simone
 Crain, Mr. & Mrs. Rogers
 Cullman, Edward
 Cummings, Jim
 Curran, Kathy

Curtin, Paula
 Dahl, Anne
 Dakin, Sarah G.
 Dalby, Jill
 Dale, John S. & Cheryl L.
 Dana, Andrew C. & Susan W.
 Dana, John L. & Margo
 Deveny, Tom W.
 Dickinson, III, Joshua C. & Sarah
 Rao-Dickinson, Alison
 Dietrich, Garrett W. & Carolyn
 Doane, Georgia
 Donnelley, II, Thomas E.
 & Barbara C.
 Dorn, Joseph W.
 Dowling, Michael P.
 Doyle, William
 Duke, Gar & Nicole Friend
 Dykstra, Curt
 Eder, Sr., Bert P. & JoAnn
 Edwards, John & Gayla
 Ellis, Alexander
 Ellis, Janet H. & James C. Hansen
 Emery, Bob & Dana Morton
 Emmett, Tyler & Morgan
 Engebretson, Mark F.
 & Carol M. H.
 Engebretson, Peter
 Epple, Andrew C. & Paulette J.
 Epstein, Stuart
 Erickson, Jay & Ann Gilkey
 Erwin, William A.
 Ethnoz, Greg & Nicole
 Fagan, Taunya S.
 Fanizzi, Fred & Maria
 Fearon, Robert Scott & Jennifer J.
 Feldman, Kirsten
 Fife, Doug
 Fisher, Richard & Joanne
 Fitzgerald, Paul
 Flowers, Natalie
 Foster, Timothy E. & Ellen P.
 Fraise, George P.
 Frater, Hugh R.
 & Kristen J. Feldman
 Frazer Lowe, Barbara

Freeman, William H.
 & Elizabeth Joyce
 Friend, Robert B. & Michelle
 Galbreath, Lizanne
 Galvin, Christopher B. & Cynthia B.
 Garcelon, Travis & Sophie
 Garlick, Lawrence & Pamela
 Garten, David B. & Anita W.
 Sam Gary, Jr., Family
 Gauling, Rodger D.
 Gillam, Con & Daphne
 Gilmor, Zachary
 Gingras, Paul, DMD & Sally
 Glynn, Martin W.
 Gobbs, Richard L. & Susan G.
 Goettel, David V. & Alena Z.
 Goldberg, Frederick
 & Carolyn Lakewold
 Goodwin, J. Barton & Elizabeth F.
 Gordon, Richard & Cheryl Watkins
 Graham, Bruce J. & Margery M.
 Gray, Randall H.
 & Nora Flaherty-Gray
 Greenblatt, Russell
 Guckenberg, David S. & June
 James M. Guyette Family
 Gwilliam, Scott L. & Jennifer B.
 Hafer, Janna S. & W. Randall
 Hall, C. Barrows & Eleanor L.
 Hall, Joanie & Robert
 Hamburg, Scott & Anna Zon
 Hansen, Elaine
 Haring, Jr., William F.
 & Carol McSweeney
 Harris, Jerrold B. & Bobette J.
 Harris, Lisbeth (Lou Ann)
 Hart, William F. & Elizabeth S.
 Hauth, Donald K.
 Hawks, Jane & Bob
 Hayes, George & Catherine
 Hazen, Judy
 Heenan, John
 Heminway, Jr., John H. & Kathryn
 Herman, Sidney N. & Margaret D.
 Hess, Philip
 Heyneman, Susan S.

MORE FAMILY OF FRIENDS

- Hibbard, Chase
 Hibbard, Scott & Gretchen
 Hibbard, Tyrrell & Mary
 Higgins, Tyler
 Highland, James A.
 Hill, Marilyn & Wayne
 Hoffman, Mark R. & Mary N.
 Hohenlohe, Christian C. & Nora R.
 Hohne, Richard
 Holland, Noel J. & Yvonne
 Hops, Larry W.
 & Collette I. Brooks-Hops
 Hudson, Bannus B. & Cecily K.
 Hulet, Elliot J.
 Hurd, Robert N., MD & Carol L.
 Hutchins, Judith
 Hutten, Jeff & Tamara
 Inches, Jill & Robert
 Ingalls, John
 Iskenderian, Alex & Julie
 Jackson, M. Roy & Gretchen S.
 James, Hamilton "Tony" & Amie
 James, Pietro N. & Lynn A.
 Jamrack, Allida Penelope
 Johnson, Greg E. & Tracy
 Johnson, Harmony
 Johnson, Katherine (Katie) & Jed
 Johnson, Lawrence D.
 Johnson, Leonard & Patricia
 Johnson, Ralph & Hilary
 Jones, Michael C. & Mary Frances
 Jones, Tom & Alvira
 Jones, Walker & Bill
 Jovick, Robert L. & Stacey
 Joys, David & Sandra
 Judd, Robert H. & Kathryn L. Kelly
 Kaufman, Kenneth & Barbara F.
 Keith, III, Robert J.
 & Marisa Bueno
 Kelly, Francis J. & Deloris L.
 Kempff, Jonathan & Janet
 Kendall, Katherine
 & George Sherman
 Kennon, Aaron J. & Annika R.
 Estate of Richard S. Kice
 Kidd, Barron Ulmer
 Kidd, Matthew & Sheena
 King, Deborah Van Dyke
 King, Jr., Donald A. & Janemarie
 Kingsley, Anna-Lisa
 Kirk, Roger S.
 Klein, Peter D. & Anne F. Ashbaugh
 Klockman, Jane D.
 Knell, Charles A. & Marcia S.
- Knudsen, Kathy L.
 Konigsberg, Jan & Christy
 Kress, Kenneth A. & Karen B.
 Krause, Carrie
 Kuhn, Jr., Walter & Nancy
 Kulina, Thomas P. & Meri Stevens
 Kurtz, Willis & Caroline Lupfer
 Ladd, Eric
 Ladd, Roger & Cheryl
 Lalani, Sal & Carol
 Lambert, Kirby
 Landes, Paul H.
 Landewe, Rebecca
 Lang, Sr., Roger A. & Sue J.
 Langlas, Steve
 Larsen, Lisa A. & Raymond Flaherty
 Laszlo, Ann G.
 Laszlo, Jr., Andrew & Paulette
 Laszlo, Jeff
 Lauer, Patricia A.
 Leander, Peter & Tana
 Ledger, Mark T. & Ann A.
 Legg, William M.
 Leuschen, David M.
 Levitan, Matthew
 Levy, Paul
 Lewis, Marcus & Terry
 Lindbergh, Land M.
 Littlefield, Max
 Loeb, Jeffrey & Margaret
 Long, William & Billie Miller
 Mackley, Julie A.
 Mannix, Cole
 Marks, Heidi
 Marren, John W. & Lynda G.
 Martin, Sandy & Anne
 Marx, Glenn
 Matelich, George E.
 Maushardt, Jane E.
 May, Karen
 McCurdy, Brian
 McDermott, Edward T. & Emily Q.
 McGuane, III, Thomas F.
 & Loraine B.
 McGrail, Thomas
 McIvor, William C.
 McLane, Linda Harper & P. Andrews
 McLoughlin, Heidemarie
 & David L. Genter
 McManus, Sandra J.
 Melzer, Tyler
 Merritt, John B.
 Messina, James & Taya Cromley
 Meyer, Neil & Dixie
- Meyer, Stanley F.
 Milhoan, Whitney
 Miller, John W. & Debra K.
 Miller, Lin & Megan
 Minton, Dwight C.
 Mitchell, D. Brent & Kathryn L.
 Mitchell, Douglas & Julie
 Montag, Jeffrey M. & Kim H.
 Montague, Chris
 Moon, Twila
 Morgan, Lance & Gloria Borger
 Morgens, Edwin & Linda
 Moseley, Paul
 Mott, Maryanne
 Muir, Barbara
 Mummert, Marquis & Jenny T.
 Musselman, Jeff
 Musser, Bill, Linda, Philip, & Lila
 Mutascio, Paul & Jill Gotschalk
 Nassetta, Paul C.
 Nehal, Dr. Kishwer S.
 & Dr. Adrian Fisher
 Nelson, Davilyn L.
 Nelson, Paul B.
 Nicholson, Alan & Nancy
 Norsworthy, George
 Nova, Dan & Annette
 Nussbaum, Brad & Pauline
 Nutt, Robert
 O'Connor, Roy S. & Susan
 O'Connor, Tad
 O'Steen, John & Judi
 Odegaard, Paul & Suzanne
 Ohman, Christopher C.
 & Tamara J. Uecker
 Ollinger, Skip & Deborah
 Olsen, George S. & Ellen Vogelsang
 Ossorio, Jr., Frederic E. & Stacy M.
 Oswood, Mark W. & Judith L.
 Owen, David L. & Kathryn J.
 Owen, Morgan & Marisa
 Owen, Russell
 Packard, Julie
 Paine, Jr., Peter S.
 Paoli, David R. & Monica Conrad
 Parker, Paul W. & Anne P.
 Parks, Stephen E. & Judith D.
 Patterson, Donna
 Patterson, Thomas A. & Kristi
 Paul, Ronald N.
 Paulek, Mark & Jeanne Hamilton
 Pearce, Kevin
 Peck, Charles & Yuryra Guzman
 Petersen, Gerald R.
- Peterson, Jess
 Petrin, Chris
 Pfeiffer, Steven B.
 & Kristin Reagan Pfeiffer
 Phelps, Chris
 & Margaret Hollow-Phelps
 Phelps, Hollow-Phelps,
 & McConkey Families
 Phinney, Ben & Barbara
 Pierrepont, Jay & Lisa
 Ploder, Steven E. & Lisa A.
 Poett, III, Henry W. & Cynthia S.
 Pogge, Sandra L. & David L.
 Povich, Maurice R. & Connie Chung
 Proops, Jay D. & Mary K.
 Quinn, Barbara (Jane)
 & Dr. William (Bill)
 Rahr, David & Bridget
 Rahr, William T.
 Raible, Joe & Barbara
 Ramirez, Kelly & Marcus Pearson
 Rasker, Jodi & Raymond
 Rasmuson, Judy A.
 Rasmussen, Robert S.
 Rauner, Bruce V. & Diana Mendley
 Reed, Glenn W. & Barbara W.
 Reynolds, Michael
 & Sara Stalnaker
 Rice, Errol
 Richards, S. F. & Bruce William
 Ringling, Rock & Bobbi Uecker
 Ritchey, David
 Robbins, Gary L. & Cheryl J.
 Roberts, Donald & Carol
 Roe, Sandra B.
 Rogers, Thomas T.
 Rokita, Rusty R. & Deborah A.
 Rokosch, Abby
 Oswood, Mark W. & Judith L.
 Romatowski, Peter J.
 & Suzanne Bonner
 Roos, Kathie M. & Neal W. Blossom
 Rosenthal, Edward S. & Nancy G.
 Rosenthal, Noah
 Rostad, Phil
 Roth, Jane R.
 Rotticci, Edward
 Roy, Caroline
 Royer, Wilfried L. & Margaret A.
 Rubin, James S. & Gretchen
 Rubin, Robert E. & Judith O.
 Ruedisili, Robert D.
 Rusmore, Barbara
 Sampson, John
- Santa, John L. & Carol M.
 Satterthwaite, Frank L. & Janet
 Scharnberg, William
 & Kathleen Reynolds
 Schiltz, Donald & Sharon
 Schmidt, Jr., Dr. Chester W.
 Schulein, Dr. Mark
 & Dr. Genevieve Reid
 Schurz, Franklin
 Schwab, Charles R. & Helen O.
 Seal, Christian G.
 Seidel, Robert L. & Judith A.
 Seitz, Frank
 Shade, Darren
 Shaw, Dr. Alan H.
 Shearer, Cindy
 Sheffler, Kathleen
 Sherman, Roger
 Shipman, David
 Shore, Stephen & Virginia
 Siderius, Charles E.
 Siderius, Kenneth L.
 Siebel, Jr., Kenneth F. & Judy
 Silverman, Paul & Constance M.
 Simonds, Edward T. & Margaret R.
 Skoglund, Matt
 Slager, Barbara & Eric Knutson
 Smith, Farwell & Linda McMullen
 Smith, Gordon
 Smith, Michael K.
 Smith, Robert E.
 Sollers, III, Joseph Sedwick
 & Magge
 Sorensen, Jerald L. & Patti
 Spanjian, Kris & Ray Gilbertson
 Sperry, Janet Hoyt
 Spinelli, Margaret A. & Felix J.
 Standifer, Traci
 Stanley, Paul D. & Marolyn J.
 Stark, Jennifer & Jeremy
 Staub, Sherry
 Steiner, Ernest & Anna
 Stephens, Ralph C. & Betsy W.
 Stolp, Staci
 Straub, Patrick, Brandy, Adela,
 & Mikaela
 Taylor, III, Bill & Susie
 Taylor, Carson G. & Deborah Cooper
 Taylor, James H. & Valerie Anne
 Teller, John
 Tempest, Jennifer Phelps
 Thisted, Elizabeth G.
 Thomason, Rich & Sally
 Townsend, Jerry
- Tsiang, Judith A.
 Tureck, Judy & Hugo
 Tysse, Deb
 Vana, Jordan
 Vana, Judy
 Vanzant, Steven
 Vaughan, Lora
 Vermillion, Clinton D., MD
 & Margaret H.
 Vermillion, Dan
 Virgo, Jack
 von Clemm, Emmilie
 Von Der Pahlen, Maria C.
 & Adrian Douglas Leighton
 von Stade, Jr., Charles S.
 Vroon, Bryan
 Waller, John & Amy
 Wallner, Fred & Mary Kay
 Walter, John & Wendy
 Ward, Jr., William F. & Deborah H.
 Watson, Lorraine
 Watts, Brenda
 Watts, Bridgett
 Wayman, Karen & Thomas Gaa
 Weissman, MD, Irving L. & Ann
 Welch, Jeff & Kelly Niles
 Wellenstein, Michael S. & Cori E.
 Welles, Jeff & Maud I.
 Wellington, James F.
 Weyerhaeuser, Robert M.
 Wheat, Michael E. & Debra L.
 Wheeler, Col. James S. & Jane
 Whitney, Jay & Sandra
 Wiese, Jessica L.
 Williams, Burton & Joan
 Williams, Conrad "Duke"
 Wilson, III, Kendrick R.
 & Ann Jackson
 Wilson, John L. & Jan
 Wilson, Kendall & Vickie
 Wilson, Penelope P.
 Wilson, Suzanne
 Wilson, Verma
 Wimberly, J. David
 Wolf, Jason & Karen
 Wortman, Kirk
 Wright, Randy & Jennifer
 Wright, Theodore M. & Elizabeth H.
 Wrinkle, Guy Curtis & Cynthia
 Yackel, John P. & Eleanor R.
 Zackheim, Hugh & Karen
 Zaideman, Robert & Julie
 Zovickian, Stephen & Jan

IN MEMORIAM

Anderson, Jay E.	Flood, James C.	Kelly, Dr. Francis J.	Roos, Paul
Berry, Carl	Gary, Sr., Samuel	Kittredge, William	Shiltz, Donald
Bordsen, Mark	Hagar, George	Lerner, Jane	Strong, Mary O.
Deiss, Ronald	Heaney, Dr. William	Mason, Lynn	Wood, Pat & Warren
Dyk, Arie	Higgins, Frank	Patterson, William	

FOUNDATIONS, COMPANIES, AND ORGANIZATIONS

1111 Foundation	Alex J. Ettl Foundation	Northwest Farm Credit Services
Acts 20:35 Fund	First Cornerstone Foundation	Norwell Fund
Adirondack Foundation – Paine Family Fund	Five Points Foundation	Outlaw Partners
AGL Foundation	The Folley Family Foundation	Patagonia.com
Amazonsmile Foundation	Georgia Baker Artworks	PGN Foundation
Anglers' Club of Chicago	Geraldine C. & Emory M. Ford Foundation	Pleiades Foundation
Arthur M. Blank Family Foundation	Forestation, Inc.	The Pocket Foundation
B Bar Ranch	Gates of the Mountains Foundation	Pond Family Foundation Trust
Baroque Music Montana	Greater Yellowstone Coalition	Rahr Foundation
Belgrade News	Grey Rocks Foundation, Inc.	Real World Design
Berkshire Hathaway	Gulch Distillers	Reed Family Foundation
HomeServices Montana	The Hall Family Fund	Rocky Mountain Supply, Inc.
Properties – Sarah Day	Hawaiian Islands Land Trust	Ruby Habitat Foundation
Bibler Resources Company	Headwaters Montana, Inc.	Schatz Quality Carpentry, Inc.
Big Sky Resort Area District	Susan Scott Heyneman Foundation	The Schlinger Family Foundation
Blake Creek Project Management	The Horn Foundation	Sieben Live Stock Company
Bozeman Symphony	Wilber B. & Signa W. Howe Revocable Trust	SLF Foundation
Bridger Aerospace	Huppert, Swindlehurst & Woodruff, PC	Slootman Family Fund
Group Holdings, LLC	Intermountain Opera Bozeman	Spanish Peaks Mountain Club
The Broadbent Family Foundation, Inc.	J. C. Kennedy Foundation, Inc.	C. Stone Foundation
Cadeau Foundation	Jetco Properties	Stony Point Foundation
Care & Quality Spraying – John Huyser	Robert Wood Johnson 1962 Charitable Trust	SW Montana Farm & Ranch Brokers
The Charities Aid Foundation	Kalsta Ranch	Swan River Valley Real Estate
Churchill Equipment, Inc.	Kelly Ranch	The Tapeats Fund
The Cinnabar Foundation	Knight Foundation, Inc.	TBR Fund
Liz Claiborne & Arthur Ortenberg Foundation	The Andrew & Paulette Laszlo Foundation	Terra Western Associates
Cherbec Advancement Foundation	Lechner & Stauffer, Inc.	The Leroy Thom, Jean Thom and T-L Foundation, Inc.
The Coulter/Weeks Charitable Foundation	Lew Franck Family Fund	Tordik Wildlife Foundation
Cromley Messina Foundation	Lewis & Clark Expeditions, Inc.	Judith A. Tsiang Charitable Fund
Custer Battlefield	Little Belt Cattle Company, LLC	Watson Irrigation
Preservation Committee	Little-Kittinger Foundation	Vroon Family Gift Fund
Davis Family Charitable Trust	Lovett-Woodsum Foundation, Inc.	Matthew A. & Susan B. Weatherbie Foundation
Denbury	Manhattan Bank	David L. Weaver – Nash, Zimmer & Weaver, PLLC
Gary W. Dietrich Family Foundation	McGuire Family Foundation	James Wellington & Family Gift Fund
Double AA Corporation – Allmon Family	Sandra McManus Designs	Western Skies Strategies, Inc.
Dry Fly Montana – Pat & Brandy Straub	Montague's Jewelers, LLC	The Wildwood Foundation
East Rosebud Fly & Tackle Company	Montana Chamber Music Society	Willie's Distillery, Inc.
Eddy Foundation	Montana State Employee Charitable Giving	Willimphila Foundation
Edward Jones Investments – Jared Hauskins	Moonlight Community Foundation	Woodson Ranch
The Charles Engelhard Foundation	Moonlight Territory Holdings, LLC	Yellowstone Club Community Foundation
ERA Landmark Real Estate – Robyn Erlenbush	Morgan Stanley	Yellowstone Development, LLC
	The Nalen Foundation – Craig Nalen	
	National Fish and Wildlife Foundation	

THE MONTANA LAND RELIANCE

Thanks to the continued support of its generous donors, The Montana Land Reliance (MLR) had another banner year in 2020.

MLR's operations continue to be amazingly efficient, with expenditures for the year running under budget. Revenues for the year exceeded expenditures again this year – as they have for the past 42 years – resulting in a gain of \$1,173,990 in the General Fund. MLR was able to make grants to the Montana Land Reliance Foundation (the Foundation) in the amount of \$473,375 in 2020. These grants allow for continued growth in the corpus of the Foundation's investment accounts.

2020 FINANCIAL REPORT

Income	\$ 2,861,513
Expenses	\$ 1,687,519
General Fund	\$ 3,479,095
Accounts Receivable/Payable	\$ 265,330
Land Acquisition Fund	\$ 4,569,289
Total Assets	\$ 8,313,714

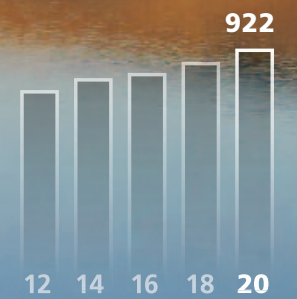
as of 12-31-20



John Lambing

THANKS TO
YOUR SUPPORT

Total Number
of Conservation
Easements



*Rocky Mountain Front
near Augusta*

FINANCIAL
STRENGTH

MLR Foundation
Total Assets

\$32,873,657



Rosebud County

MLR FOUNDATION

To say the least, 2020 was a challenging year for most of us.

As for the Montana Land Reliance Foundation* (the Foundation), we met those challenges head on and managed our investments to minimize losses and rebound quickly. Fiscal responsibility has always been a hallmark of both the Foundation and The Montana Land Reliance (MLR), which helped us to weather the storm and continue to carry out the charitable purposes of MLR.

The Board takes its role as stewards of the Foundation's investment portfolio very seriously and we work with MLR management and Morgan Stanley to balance protecting our funds for the future, earning income to support MLR's operations, and providing growth. The Foundation's investments are managed to ensure compliance with our investment policies and to enhance the Foundation's financial strength.

In 2020, the Foundation granted \$293,024 to MLR from our Land Protection Fund to support stewardship and easement monitoring. Additionally, the Foundation granted \$136,317 to MLR for education and outreach and \$20,000 for conservation activities.

*a 509(a)(3) support organization to The Montana Land Reliance

Investment earnings (including changes in market value) were \$3,708,986 in 2020 – averaging a 13.4% return on investments net of fees. The Foundation received \$473,375 from MLR and this along with our investment value increases and earnings grew our net assets from \$29 million to nearly \$33 million after reflecting grants to MLR and other expenses.

The Foundation Board members – Karen Kress, Doug Mitchell, Jerry Townsend, Phil Rostad, Lee Freeman, and myself are honored to serve and oversee the investments of the Foundation and provide funding for MLR's conservation efforts for many years to come. On December 31, 2020, my term and Jerry Townsend's term on the Foundation Board ended. The Foundation and MLR give thanks to Jerry for his many years of service to the Board. Doug Mitchell will serve as President in 2021 and we welcome Tom Patterson and Kirsten Feldman as new Foundation Board members.

– Kim Montag, MLR Foundation President



2020 FINANCIAL REPORT

Land Protection Fund	\$ 18,481,950
<i>The corpus is available to defend and protect land already under easement; income is used for stewardship projects, monitoring of easements, and completing easements for donors who cannot cover these costs.</i>	
Education & Outreach Fund	\$ 10,123,819
<i>Income finances conservation education and outreach to landowners and the public.</i>	
Conservation Fund	\$ 2,826,262
<i>A permanent, irrevocable endowment designed to accept gifts from individuals or direct gifts from corporations, partnerships, or estates.</i>	
MLR General Operating Fund	\$ 1,376,345
<i>Account used for day-to-day operations of MLR.</i>	
Traditions Fund	\$ 54,435
<i>A permanent, irrevocable endowment designed to accept planned gifts from individuals or direct gifts from corporations, partnerships, or estates.</i>	
Foundation Operating Fund	\$ 10,845
<i>Account used for day-to-day operations of the Foundation.</i>	
Total Assets	\$ 32,873,657
<i>as of 12-31-20</i>	

RUBY HABITAT FOUNDATION

As I write this, the Ruby Valley has settled into the quiet of winter. Once again, the days have become short and the nights long and cold. It feels as though the valley is resting from a full summer's work and storing up energy to begin providing a green lush habitat for abundant wildlife that will depend on new growth as spring arrives and the production of summer comes to full bloom. Although the coming growing season will be different from any before, we know with certainty that the sun will put in longer days and the plant life will produce in proportion to the moisture available. The yearly cycle will begin again.

We, as humans, have been given the responsibility and opportunity to preserve and manage the natural resources in a way that provides long term stability rather than a short term gain. Possibly the largest project that has taken place on the Woodson Ranch is the restoration of Clear Creek. It has been a non-functioning stream for many years due to being straightened decades ago. I would imagine this was done not anticipating the long term consequences that would occur.

The benefits of this project will be realized for years to come. The fishery of the Ruby River will benefit immensely with the addition of spawning areas and the lower water temperatures that will result.

**a 509(a)(3) support organization to
The Montana Land Reliance*

Having the stream in contact with the flood plain will help store water for later-season use and create wildlife habitat. This project is coupled with the change of irrigation practices that the neighboring properties have supported and joined in on to increase flows in Clear Creek. This is a project that benefits everyone: agriculture, the fishery, and wildlife. I am sure eager to see how the true character of Clear Creek is expressed in the coming years.

The building of an apple orchard to preserve the varieties of apples that have not just survived but thrived in the Ruby Valley for one hundred years or more is one that has such a good feel to it. Hopefully, there will be visitors one hundred years from now that will taste an apple from the orchard and have a big smile at the delicious taste.

Ruby Habitat Foundation* has been and will continue to be a leader in southwest Montana focusing on good natural resource management and the social and economic fabric of our communities. We highly value our many generous supporters. You are true partners as we continue to learn and grow in the never-ending quest of good stewardship. Thank you.

*– Neil Barnosky,
Ruby Habitat Foundation
Chairman*



2020 FINANCIAL REPORT

Income	\$ 562,559
Expenses	\$ 377,352
Net Income	\$ 185,207
Rural Heritage & Open Lands Fund	\$ 110,517
Hill Education & Outreach Endowment	\$ 150,189
Woodson Ranch Endowment	\$ 8,789,635
General Fund	\$ 298,351
Fixed Assets	
Equipment & Improvements	\$ 1,038,488
Land	\$ 7,762,144
Visitor Center Building & Donated Art	\$ 44,423
Total Assets <i>as of 12-31-20</i>	\$ 18,193,747

2020 BOARD OF DIRECTORS

Group A: The Montana Land Reliance
George Olsen; Rock Ringling, Vice-president;
Lois Delger-DeMars

Group B: Woodson Family
Martha Woodson, Secretary; Robin Mitts, Treasurer;
Leslie Vanderpool; Lisa Matthews

Group C: Ruby Valley Community
Neil Barnosky, President; Bruce Peterson; Steve Wood

Executive Director: Les Gilman

Outreach Coordinator: Dave Delisi



The Ruby Habitat Foundation is dedicated to preserving and enhancing the natural resources and social and economic makeup of the Ruby Valley and southwestern Montana.

DIRECTORS, STAFF, & TRUSTEES

BOARD OF DIRECTORS

George Olsen
President
Retired CPA
Helena, MT

Rick Berg
Vice President
Rancher
Martinsdale, MT

Phil Rostad,
Secretary-Treasurer
Rancher
White Sulphur Springs,
MT/Bozeman, MT

Allen Bjergo
Agricultural
Consultant/Farmer
Corvallis, MT

Shane Colton
Attorney
Billings, MT

Kirsten Feldman
Businesswoman
Nye, MT/New York, NY

Caroline Kurtz
Writer/Editor
Missoula, MT

David Leuschen
Founder/Senior
Managing Director,
Riverstone Holdings, LLC
Roscoe, MT/New York, NY

Chris Montague
Business Owner
Billings, MT

Jerry Sorensen
Retired Land Asset
Management
Bigfork, MT

Jerry Townsend
Rancher
Highwood, MT

Judy Tureck
Landowner
Coffee Creek, MT

Dan Vermillion
Business Owner
Livingston, MT

Kendrick R. Wilson, III
Retired Businessman
Emigrant, MT/
Hobe Sound, FL

LAND STEWARDS

Terry Althaus
Don Carroll
Pat Flanary
Jerry Iverson
Skip Kowalski
Tom Maxwell
Brian Neilsen
Jim Roscoe
Kevin Suzuki
Tom Wittinger

Louise Bruce
Andrea Darling
Ron Hvizdak
Cathey Hardin
Gayleen Malone
John Moorhouse
Dan Reinhart
Erin Shanahan
Denise Wade



Lynn Donaldson

Board of Directors, L to R: Shane Colton, Chris Montague, Caroline Kurtz, George Olsen, Rick Berg, Ken Wilson III, Judy Tureck, Allen Bjergo, Jerry Townsend, Jerry Sorensen, David Leuschen, Phil Rostad, Dan Vermillion. Not pictured: Kirsten Feldman

STAFF

Matt Bell
GIS Coordinator/
Land Steward

Kim Cook
Administrative Assistant

Lois Delger-DeMars
Managing Director

Christian Dietrich
General Counsel

Brad Hansen
Eastern Manager

Kathryn Kelly
Greater Yellowstone
Manager

Bri Nottingham
Stewardship Coordinator

Mark Schiltz
Western Manager

Becky Stearns
Bookkeeper

Katie Stokes
Development Manager

Will Trimbath
Lands Manager

Kendall Van Dyk
Managing Director

Jordan Vana
Managing Director

Jessie Wiese
Southwest Manager

FUTURE MONTANA COMMITTEE

Kori Anderson
Corvallis, MT

Freddy Avis
Los Angeles, CA

Nick Bucklin
Mill Valley, CA

Augusta "Gusty" Clarke
Chicago, IL

Ben Christensen
Bozeman, MT

Alex Ellis
Portland, OR

Cole Mannix
Helena, MT

Brian McCurdy
Bozeman, MT

Jess Peterson
Billings, MT

Kelly Ramirez
Bozeman, MT

Errol Rice
Bozeman, MT

COUNCIL OF TRUSTEES

Richard Beattie
Retired Businessman
New York, NY

William S. Broadbent
Retired Businessman
Geysler, MT/
Indian River Shores, FL

John Carron, PhD
Hydros Consulting
Boulder, CO

Millard & Mina Cox
Ranchers
Absarokee, MT

John S. Dale
Retired
Ovando, MT/
Waubay, SD

Bob & Joanie Hall
Businesspeople
Livingston, MT/
New York, NY

Sidney (Skip) Herman
Managing Partner
Bartlit Beck Herman
Plenchar & Scott, LLP
Big Timber, MT/
Chicago, IL

Judy Hutchins
Landowner
Heron, MT

William T. Hutton
Professor Emeritus,
University of CA Hastings
College of the Law
Ennis, MT/
Nevada City, CA

Hamilton E. "Tony" James
President &
Chief Operating Officer,
The Blackstone Group
Twin Bridges, MT/
New York, NY

David S. Joys
Retired
Nye, MT/
New York, NY

Thomas Patterson
General Partner,
Madrone Capital Partners
Menlo Park, CA/
McLeod, MT

Jim Messina
President & CEO
The Messina Group
Washington, DC/
Clyde Park, MT

D. Gideon Searle
Managing Partner,
The Serafin Group
Miami Beach, FL

Paul Stanley
Businessman
Gallatin Gateway, MT

William Taylor, III
Partner,
Zuckerman/Spaeder/
Goldstein/Taylor/Kolker
Emigrant, MT/
Washington, DC

Kirk Wortman
Businessman
Jackson Hole, WY

A scenic landscape of a mountain valley. In the foreground, there is a golden field with several large, cylindrical hay bales. In the middle ground, a weathered wooden barn with a gabled roof stands prominently. The background features a large, forested mountain range under a cloudy sky. The overall tone is warm and natural.

HOW YOU CAN HELP

Staff can assist you in determining the most suitable option for your financial needs.

Call us at
406-443-7027
or visit
mtlandreliance.org

Mission Valley

There are many ways that families, individuals, foundations, corporations, and organizations can provide financial support for MLR's conservation work.

Because MLR is a non-profit corporation, contributions made to MLR are tax-deductible. Planned gifts are one way to make a meaningful impact on MLR's mission, but there are many ways that families, individuals, foundations, corporations, and organizations can provide financial support for MLR's conservation work.

Stock gifts are welcome and MLR has a very streamlined process in place through its investment team at Morgan Stanley to assist donors to ensure a smooth, well-documented transaction.

Your gift goes directly to MLR's work with private landowners to protect Montana's open spaces and working landscapes.

How to Give

- Cash contributions
- Securities, land, vehicles, and other property

Gift & Estate Planning

- Bequests
- Gift annuities
- Charitable trusts
- Life estate gifts
- Life insurance policies
- Beneficiary designations
- Retirement assets

MLR's tax identification number is 81-0369262.



Protecting Montana's
Open Landscapes

HELENA OFFICE

Post Office Box 355 • Helena, Montana 59624-0355 • 406-443-7027 • info@mtlandreliance.org

GLACIER/FLATHEAD OFFICE

Post Office Box 460 • Bigfork, Montana 59911-0460 • 406-837-2178 • mlrnw@mtlandreliance.org

GREATER YELLOWSTONE OFFICE

Post Office Box 10843 • Bozeman, Montana 59719-0843 • 406-579-5481 • mlrgy@mtlandreliance.org

BIG SKY OFFICE

Post Office Box 161554 • Big Sky, Montana 59716-1554 • 406-594-1570 • mlrsw@mtlandreliance.org

MTLANDRELIANCE.ORG

